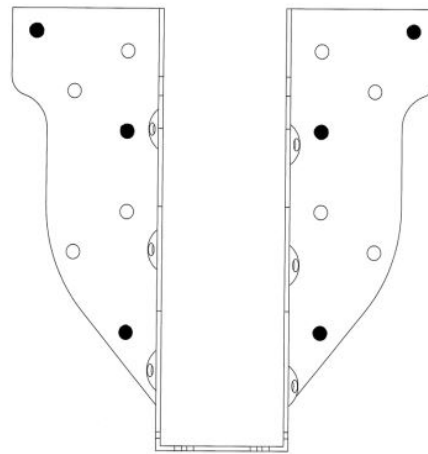


HUS26 Face Mount Hanger Masonry Application

The HUS26 Face Mount Hanger can be used to connect 2x6 or 2x8 plated wood trusses, rafters, or joists to masonry wall structures. Allowable loads are based on proper use of fasteners installed per manufacturer's specifications.

- Masonry screw shall be 3/16" diameter Powers® Fasteners Tapper+ or equivalent
- Minimum masonry screw embedment shall be 1-1/4"
- Install masonry screws **only in shaded fastener holes** as indicated on illustration to achieve listed loads in the table below
- To prevent contact with masonry, drive the joist nails perpendicular into the carried joist



HUS26

Joist Size	MiTek Stock No.	Steel Gauge	Dimensions (in)			Fastener Schedule ²				DF/SP Allowable Load (Lbs.) ^{1,3}		
			W	H	D	Masonry		Joist/Beam		Download 100%	Uplift ⁵ 160%	Field Uplift ⁶ 160%
						Qty	Tapper+® HWH Screw Anchor	Qty	Type ⁴			
2 x 6-8	HUS26	16	1-5/8	5-7/16	3	6	3/16"	6	10d x 1-1/2	840	280	840

1) Allowable loads assume the use of Powers® Tapper+® HWH 3/16" with minimum embedment of 1-1/4".
 2) Fasteners to be installed per manufacturer's recommendations.
 3) Allowable loads are based on specified holes being filled.
 4) 10d x 1-1/2" nails are 0.148" dia. x 1-1/2 long.
 5) Allowable uplift when the uppermost masonry fasteners have an edge distance less than 2" from the top of the masonry wall.
 6) Allowable uplift when the uppermost masonry fasteners have an edge distance greater than 2" from the top of the masonry wall.

Customer Service & Technical Assistance

Phone: 1-800-328-5934 • Fax: 1-952-898-8605 • Email: customerservice@mii.com