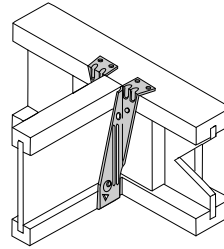


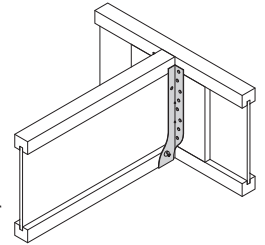
PART NUMBER SYSTEM FOR TFL, THO & THF HANGERS

Part Numbers assigned to *TFL*, *THO*, and *THF* I-joist hangers reveal the I-joist sizes to be used with the specific hanger. This guide will teach you how to recognize I-joist dimensions in the part numbers.

TFL/THO
Top Mount
I-joist Hanger



THF
Face Mount
I-joist Hanger



THO25925-2

THO

25

925

-2

Letters
refer to
Hanger Series
ex.: THO

First (2) Digits
refer to
Member Width
ex.: 2.5 inches

Last (2) or (3) Digits
refer to
Member Height
ex.: 9.25 inches

Digits after Dash
refer to
Number of Plys
ex.: 2 ply

TFL 23118

1st, 3rd, and sometimes 4th digits are whole numbers
(This example denotes 2 and 11)
4th digit may be part of a decimal – ex.: THO15925

2nd and 5th digits are decimals (see guide below)
(This example denotes .3125 [5/16] and .875 [7/8])
5th digit may be (0) or dropped if height is even

Some Examples:

THO15950 1-1/2" x 9-1/2"
THF17925 1-3/4" x 9-1/4"
THO20950-2..... double 2" x 9-1/2"
THF23140-2..... double 2-5/16" x 14"

Note: USP's Product Catalog lists a range of heights for *THF* hangers. Face mount hangers can usually accommodate more than one I-joist height. The hanger height must be tall enough to support the top chord of the I-joist to eliminate web stiffener requirements on solid sawn or joists with web stiffeners. The *THF* hanger must be a minimum of 60% of the joist height.

Part Number Guide for Decimals

1	= .125	or	1/8 inch
2 or 25	= .25	or	1/4 inch
3	= .3125	or	5/16 inch
5	= .5	or	1/2 inch
6	= .625	or	5/8 inch
7	= .75	or	3/4 inch
8	= .875	or	7/8 inch



USP supplies quality products to build Stronger Safer Structures

Customer Service:
Burnsville, MN
Phone: 1-800-328-5934/
1-952-898-8772
Fax: 1-952-898-8605

Manufacturing:
Montgomery, MN
Livermore, CA
Largo, FL
Thornhill, Ontario

Warehouses:
Corona, CA
Humble, TX
Westampton, NJ

www.USPconnectors.com

A Subsidiary of MiTek, A Berkshire Hathaway Company
USP634-131