

# Connector Selector Guide

## Single Bottom Plate to Studs on 4" and 6" Walls

DF/SP Allowable Loads	Qty of Connectors	MiTek USP Stock No.	Installation Detail	Fasteners Total				Cost Index 1=Lowest; 10=Highest
				To Plates		To Studs		
				Qty	Type	Qty	Type	
305	1	RT4	--	4	8d (0.131") x 1-1/2"	4	8d (0.131") x 1-1/2"	1
350	1	RT3A	--	4	8d (0.131") x 1-1/2"	4	8d (0.131") x 1-1/2"	3
460	1	RSPT4	--	4	8d (0.131") x 1-1/2"	4	8d (0.131") x 1-1/2"	2
465	1	TSP	Min Nailing	3	10d (0.148") x 1-1/2"	3	10d (0.148") x 1-1/2"	10
490	1	HCPRS	--	5	8d (0.131") x 1-1/2"	6	8d (0.131") x 1-1/2"	8
515	1	HC520	--	11	8d (0.131") x 1-1/2"	6	8d (0.131") x 1-1/2"	10
610	2	RT4	--	8	8d (0.131") x 1-1/2"	8	8d (0.131") x 1-1/2"	9
700	2	RT3A	--	8	8d (0.131") x 1-1/2"	8	8d (0.131") x 1-1/2"	10
735	1	SPT22	--	4	10d (0.148") x 3"	4	10d (0.148") x 3"	7
750	1	RT8A	--	5	10d (0.148") x 1-1/2"	5	10d (0.148") x 1-1/2"	5
875	1	SPT4	2x4 Bottom Plate	--	--	6	10d (0.148") x 1-1/2"	4
	1	SPT6	2x6 Bottom Plate	--	--	6	10d (0.148") x 1-1/2"	6
2195	1	SPTH4	2x4 Bottom Plate	--	--	12	10d (0.148") x 1-1/2"	10
	1	SPTHW4	2x4 Bottom Plate over 1/2" Sheathing	--	--	12	10d (0.148") x 1-1/2"	
	1	SPTH6	2x6 Bottom Plate	--	--	12	10d (0.148") x 1-1/2"	
	1	SPTHW6	2x6 Bottom Plate over 1/2" Sheathing	--	--	12	10d (0.148") x 1-1/2"	



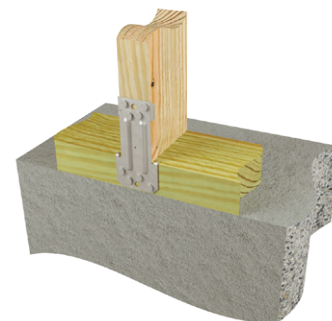
Typical SPTHW installation



Typical RT3A installation



Typical TSP min nailing installation



Typical RSPT4 single plate installation

This publication is to be used in conjunction with MiTek USP Product Catalog

### Customer Service & Technical Assistance

Phone: 1-800-328-5934 • Fax: 1-952-898-8605 • Email: USPcustomerservice@mii.com

# Connector Selector Guide

## Double Top Plates to Studs 4" and 6" Walls

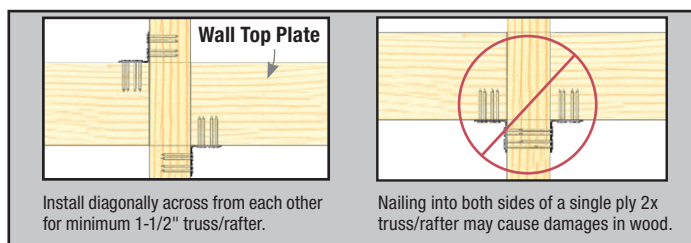
DF/SP Allowable Loads	Qty of Connectors	MiTek USP Stock No.	Installation Detail	Fasteners Total				Cost Index 1=Lowest; 10=Highest
				To Plates		To Studs		
				Qty	Type	Qty	Type	
380	1	RT5	--	4	8d (0.131") x 1-1/2"	4	8d (0.131") x 1-1/2"	1
460	1	RSPT4	--	4	8d (0.131") x 1-1/2"	4	8d (0.131") x 1-1/2"	1
540	1	RT7	--	5	8d (0.131") x 1-1/2"	5	8d (0.131") x 1-1/2"	2
580	1	RT7A	--	5	8d (0.131") x 1-1/2"	5	8d (0.131") x 1-1/2"	2
625	1	LTW12	--	6	10d (0.148") x 1-1/2"	6	10d (0.148") x 1-1/2"	8
650	1	RSPT6	--	4	10d (0.148") x 1-1/2"	4	10d (0.148") x 1-1/2"	3
750	1	RT8A	--	5	10d (0.148") x 1-1/2"	5	10d (0.148") x 1-1/2"	5
760	2	RT5	Install diagonally across plate from each other, to achieve twice to achieve twice the load (using identical anchors). See detail	8	8d (0.131") x 1-1/2"	8	8d (0.131") x 1-1/2"	7
830	1	TSP	Max Nailing	6	10d (0.148") x 1-1/2"	9	10d (0.148") x 1-1/2"	10
875	1	SPT4	2x4 Top Plate	--	--	6	(6) .148 x 1-1/2"	4
		SPT6	2x6 Top Plate	--	--	6	(6) .148 x 1-1/2"	6
900	1	RSPT6-2	Stud Size is (2) 2x	6	10d (0.148") x 1-1/2"	8	10d (0.148") x 1-1/2"	10
965	1	MTW12	--	7	10d (0.148") x 1-1/2"	7	10d (0.148") x 1-1/2"	10
980	1	LFTA6	--	8	8d (0.131") x 1-1/2"	8	8d (0.131") x 1-1/2"	10
1080	2	RT7	Install diagonally across plate from each other, to achieve twice to achieve twice the load (using identical anchors). See detail	10	(10) .131 x 1-1/2"	10	(10) .131 x 1-1/2"	10
1090	1	SPT24	--	6	(6) .148 x 3"	6	(6) .148 x 3"	10
1160	2	RT7A	Install diagonally across plate from each other, to achieve twice to achieve twice the load (using identical anchors). See detail	10	8d (0.131") x 1-1/2"	10	8d (0.131") x 1-1/2"	10
1250	2	LTW12	Install diagonally across plate from each other, to achieve twice to achieve twice the load (using identical anchors). See detail	12	10d (0.148") x 1-1/2"	12	10d (0.148") x 1-1/2"	9
1355	1	HTW20	--	12	10d (0.148") x 1-1/2"	12	10d (0.148") x 1-1/2"	10
1500	2	RT8A	Install diagonally across plate from each other, to achieve twice to achieve twice the load (using identical anchors). See detail	10	10d (0.148") x 1-1/2"	10	10d (0.148") x 1-1/2"	10
1930	2	MTW12	--	14	10d (0.148") x 1-1/2"	14	10d (0.148") x 1-1/2"	10
2195	1	SPTH4	2x4 Top Plate	--	--	12	10d (0.148") x 1-1/2"	8
		SPTH6	2x6 Top Plate	--	--	12	10d (0.148") x 1-1/2"	10
2710	2	HTW20	--	24	10d (0.148") x 1-1/2"	24	10d (0.148") x 1-1/2"	10



**Typical SPT4 installation**



**Typical SPT24 installation**



Install diagonally across from each other for minimum 1-1/2" truss/rafter.

Nailing into both sides of a single ply 2x truss/rafter may cause damages in wood.

**Anchor installation to achieve twice the load (using two identical anchors)**

This publication is to be used in conjunction with MiTek USP Product Catalog

### Customer Service & Technical Assistance

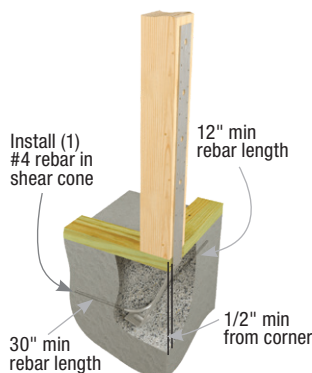
Phone: 1-800-328-5934 • Fax: 1-952-898-8605 • Email: USPcustomerservice@mii.com

# Connector Selector Guide

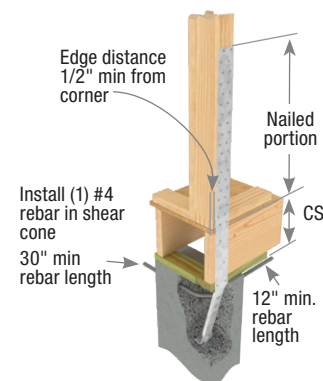
## Portal Frame and Alternate Braced Wall Panel Tie Down Device

DF/SP Allowable Loads <sup>1</sup>	Qty of Connectors	MiTek USP Stock No.	Installation Detail	Min/Max	Fastener Schedule				Deflection	Cost Index 1=Lowest; 10=Highest
					Foundation		To Studs			
					Qty	Anchor Dia. <sup>2</sup>	Qty	Type <sup>3</sup>		
1100	1	LTS20B	The designer must specify anchor bolt type, length, and embedment. Refer to MiTek's current USP Product Catalog for minimum required bolt end distance	--	1	3/4" ATR	10	10d (0.148") x 1-1/2"	0.128	7
1155	1	PAHD42	Minimum 2,500 psi concrete, single pour 1/2" minimum from corner. For edge installation loads, refer to MiTek's current USP Product Catalog	--		Embed	15	16d (0.162") x 3-1/2"	0.095	5
2265	1	STAD8	Refer to MiTek's current USP Product Catalog for complete specification details	--		Embed	24	16d (0.148") x 3-1/4"	0.045	3
		STAD8RJ	RJ = Rim Joist Application. Refer to MiTek's current USP Product Catalog for complete specification details	--		Embed	24	16d (0.148") x 3-1/4"	0.050	8
2280	1	LSTAD8	Refer to MiTek's current USP Product Catalog for complete specification details	--		Embed	24	16d (0.148") x 3-1/4"	0.025	4
		LSTAD8RJ	RJ = Rim Joist Application. Refer to MiTek's current USP Product Catalog for complete specification details	--		Embed	24	16d (0.148") x 3-1/4"	0.032	10
3035	1	PA18	Minimum 2,500 psi concrete. Minimum concrete edge distance is 4". Minimum concrete block edge distance 20". The designer must specify anchor bolt type, length, and embedment	--		Embed	12	16d (0.162") x 2-1/2"	--	2
3135	1	STAD10	Refer to MiTek's current USP Product Catalog for complete specification details	--		Embed	28	16d (0.148") x 3-1/4"	0.051	6
		STAD10RJ	RJ = Rim Joist Application. Refer to MiTek's current USP Product Catalog for complete specification details	--		Embed	28	16d (0.148") x 3-1/4"	0.058	9
3215	1	PHD2A	The designer must specify anchor bolt type, length, and embedment	--	1	5/8" ATR	6	WS3 (1/4" x 3")	0.155	10
4215	1	HTT45	The designer must specify anchor bolt type, length, and embedment	Min	1	5/8" ATR	18	10d (0.148") x 3"	0.115	1
						18	16d (0.162") x 2-1/2"	0.108		
						26	10d (0.148") x 3"	0.101		
						26	16d (0.162") x 2-1/2"			
4745	1	STAD14	Refer to MiTek's current USP Product Catalog for complete specification details	--		Embed	38	16d (0.148") x 3-1/4"	0.099	10
4745	1	STAD14RJ	RJ = Rim Joist Application. Refer to MiTek's current USP Product Catalog for complete specification details	--		Embed	38	16d (0.148") x 3-1/4"	0.103	10

- 1) The loads represented are based on a 3" thick vertical member.
- 2) ATR = All Thread Rod or Anchor Bolt.
- 3) MiTek's WS3 self-drilling hex head structural wood screws are included with connector.



**Typical HPAHD22 single pour corner and endwall installation**



**Typical STAD14RJ corner rim joist installation**

This publication is to be used in conjunction with MiTek USP Product Catalog

### Customer Service & Technical Assistance

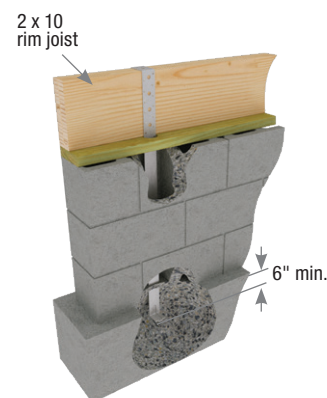
Phone: 1-800-328-5934 • Fax: 1-952-898-8605 • Email: USPcustomerservice@mii.com

# Connector Selector Guide

## Concrete Block Installation

DF/SP Allowable Loads	Qty of Connectors	MiTek USP Stock No.	Anchor Diameter <sup>1</sup>	Rim Joist Size	Fastener Schedule		Cost Index (1=Lowest; 10=Highest)
					To Rim		
					Qty <sup>2</sup>	Type	
2385	1	TA51	Embed	2x10	10	16d (0.162") x 2-1/2"	1
3230				2x12	14	16d (0.162") x 2-1/2"	
3230				2x14	16	16d (0.162") x 2-1/2"	
2385	1	TA71	Embed	2x10	10	16d (0.162") x 2-1/2"	2
3230				2x12	14	16d (0.162") x 2-1/2"	
3230				2x14	16	16d (0.162") x 2-1/2"	

- 1) Require a 6" minimum embedment into concrete foundations.
- 2) Minimum of (9) 16d nails per strap is required to meet IRC R 404.1.5.



**Typical TA rim joist to foundation installation**

This publication is to be used in conjunction with MiTek USP Product Catalog

**Customer Service & Technical Assistance**

Phone: 1-800-328-5934 • Fax: 1-952-898-8605 • Email: USPcustomerservice@mii.com

# Connector Selector Guide

## Shear Wall Tie Down Device

DF/SP Allowable Loads		Qty of Connectors	MiTek USP Stock No.	Installation Detail	Min/Max	Fastener Schedule			Cost Index 1=Lowest; 10=Highest	
Uplift 160%	Deflection					Foundation		To Studs		
						Qty	Anchor Dia. <sup>1</sup>	Qty		Type <sup>2</sup>
3110	0.118	1	HPAHD22	Minimum 2,500 psi concrete, single pour 1/2" minimum from corner. For edge installation loads, refer to MiTek's current USP Product Catalog	--		Embed	23	16d (0.162") x 3-1/2"	1
3215	0.155	1	PHD2A	The designer must specify anchor bolt type, length, and embedment	--	1	5/8" ATR	6	WS3 (1/4" x 3")	3
4215	0.115	1	HTT45	The designer must specify anchor bolt type, length, and embedment	Min	1	5/8" ATR	18	10d (0.148") x 3"	2
4160	0.108							18	16d (0.162") x 2-1/2"	
5795	0.101							26	10d (0.148") x 3"	
5005								26	16d (0.162") x 2-1/2"	
4745	0.099	1	STAD14	Refer to MiTek's current USP Product Catalog for complete specification details	--		Embed	38	10d (0.148") x 3-1/4"	4
4745	0.103	1	STAD14RJ	RJ = Rim Joist Application. Refer to MiTek's current USP Product Catalog for complete specification details	--		Embed	38	10d (0.148") x 3-1/4"	5
5215	0.137	1	PHD4A	The designer must specify anchor bolt type, length, and embedment	--	1	5/8" ATR	10	WS3 (1/4" x 3")	6
6525	0.135	1	PHD5A	The designer must specify anchor bolt type, length, and embedment	--	1	5/8" ATR	14	WS3 (1/4" x 3")	8
8185	0.062	1	PHD8	The designer must specify anchor bolt type, length, and embedment	--	1	7/8" ATR	24	WS3 (1/4" x 3")	10
8430	0.115	2	HTT45	The designer must specify anchor bolt type, length, and embedment	Min	2	5/8" ATR	36	10d (0.148") x 3"	7
8320	0.108							36	16d (0.162") x 2-1/2"	
11590	0.101							52	10d (0.148") x 3"	
10010								52	16d (0.162") x 2-1/2"	
9165	0.075	1	UPHD8	The designer must specify anchor bolt type, length, and embedment	--	1	7/8" ATR	24	WS3 (1/4" x 3")	10
6430	0.155	2	PHD2A	The designer must specify anchor bolt type, length, and embedment	--	2	5/8" ATR	12	WS3 (1/4" x 3")	9
10430	0.137	2	PHD4A	The designer must specify anchor bolt type, length, and embedment	--	2	5/8" ATR	20	WS3 (1/4" x 3")	10
14395	0.077	1	UPHD11	The designer must specify anchor bolt type, length, and embedment	--	1	1" ATR	24	WS3 (1/4" x 3")	10
13050	0.135	2	PHD5A	The designer must specify anchor bolt type, length, and embedment	--	2	5/8" ATR	28	WS3 (1/4" x 3")	10
16695	0.082	1	UPHD14	The designer must specify anchor bolt type, length, and embedment	--	1	1" ATR	30	WS3 (1/4" x 3")	10
18330	0.075	2	UPHD8	The designer must specify anchor bolt type, length, and embedment	--	2	7/8" ATR	48	WS3 (1/4" x 3")	10
33390	0.082	2	UPHD14	The designer must specify anchor bolt type, length, and embedment	--	2	1" ATR	60	WS3 (1/4" x 3")	10
28790	0.077	2	UPHD11	The designer must specify anchor bolt type, length, and embedment	--	2	1" ATR	48	WS3 (1/4" x 3")	10

1) ATR = All Thread Rod or Anchor Bolt.  
2) MiTek's WS3 self-drilling hex head structural wood screws are included with connector.



**Typical HTT45 installation**



**Typical PHD5A installation**



**Typical UPHD installation**

This publication is to be used in conjunction with MiTek USP Product Catalog

### Customer Service & Technical Assistance

**Phone:** 1-800-328-5934 • **Fax:** 1-952-898-8605 • **Email:** USPcustomerservice@mii.com

# Connector Selector Guide

## Truss/Rafter to Double Plate Installation

DF/SP Allowable Loads	Qty of Connectors	MiTek USP Stock No.	Installation Detail	Fasteners Total				Cost Index 1=Lowest; 10=Highest
				To Plates		To Truss/Rafter		
				Qty	Type	Qty	Type	
380	1	RT5	--	4	8d (0.131") x 1-1/2"	4	8d (0.131") x 1-1/2"	1
500	1	RT15	--	5	8d (0.131") x 1-1/2"	5	8d (0.131") x 1-1/2"	4
540	1	RT7	--	5	8d (0.131") x 1-1/2"	5	8d (0.131") x 1-1/2"	2
580	1	RT7A	--	5	8d (0.131") x 1-1/2"	5	8d (0.131") x 1-1/2"	2
750	1	RT8A	--	5	10d (0.148") x 1-1/2"	5	10d (0.148") x 1-1/2"	3
760	2	RT5	Install diagonally across plate from each other, to achieve twice the load (using identical anchors). See detail	8	8d (0.131") x 1-1/2"	8	8d (0.131") x 1-1/2"	5
1025	1	RT16A	2-ply rafter or truss	8	10d (0.148") x 1-1/2"	9	10d (0.148") x 1-1/2"	8
1060	1	RT16-2	2-ply rafter or truss	8	8d (0.131") x 1-1/2"	8	8d (0.131") x 1-1/2"	9
1080	2	RT7	Install diagonally across plate from each other, to achieve twice the load (using identical anchors). See detail	10	8d (0.131") x 1-1/2"	10	8d (0.131") x 1-1/2"	6
1160	2	RT7A	Install diagonally across plate from each other, to achieve twice the load (using identical anchors). See detail	10	8d (0.131") x 1-1/2"	10	8d (0.131") x 1-1/2"	6
1500	2	RT8A	Install diagonally across plate from each other, to achieve twice the load (using identical anchors). See detail	10	10d (0.148") x 1-1/2"	10	10d (0.148") x 1-1/2"	7



**Typical RT5**  
truss/rafter to  
double plate installation



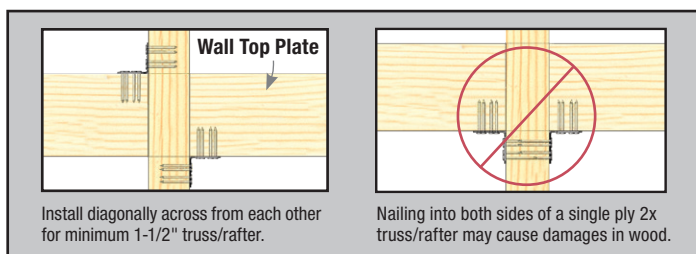
**Typical RT7**  
truss/rafter to  
double plate installation



**Typical RT7A**  
truss/rafter to  
double plate installation



**Typical RT16-2**  
truss/rafter to  
double plate installation



**Anchor installation to achieve twice the load**  
(using two identical anchors)

This publication is to be used in conjunction with MiTek USP Product Catalog

**Customer Service & Technical Assistance**

Phone: 1-800-328-5934 • Fax: 1-952-898-8605 • Email: USPcustomerservice@mii.com

# Connector Selector Guide

## Truss/Rafter to Double Plate Stud Installation

DF/SP Allowable Loads Uplift 160%	Qty of Connectors	MiTek USP Stock No.	Fasteners Total <sup>1</sup>						Cost Index 1=Lowest; 10=Highest
			To Plates/Stud		To Truss/Rafter		Stud		
			Qty	Type	Qty	Type	Qty	Type	
625	1	LTW12	6	10d (0.148") x 1-1/2"	6	10d (0.148") x 1-1/2"	--	--	1
965	1	MTW12	7	10d (0.148") x 1-1/2"	7	10d (0.148") x 1-1/2"	--	--	2
1115	1	RT20	4	10d (0.148") x 1-1/2"	9	10d (0.148") x 1-1/2"	9	10d (0.148") x 1-1/2"	6
1250	2	LTW12	12	10d (0.148") x 1-1/2"	12	10d (0.148") x 1-1/2"	--	--	3
1355	1	HTW20	12	10d (0.148") x 1-1/2"	12	10d (0.148") x 1-1/2"	--	--	4
1930	2	MTW12	14	10d (0.148") x 1-1/2"	14	10d (0.148") x 1-1/2"	--	--	5
2710	2	HTW20	24	10d (0.148") x 1-1/2"	24	10d (0.148") x 1-1/2"	--	--	7

1) Fasteners shall be distributed equally on each end of connection.



**Typical LTW12 / MTW12 truss-to-top plate installation**



**Typical RT20 truss/rafter to double plate to stud installation**

## Girder Tie Downs 2-Ply or >

DF/SP Allowable Loads Uplift 160%	Qty of Connectors	MiTek USP Stock No.	Installation Detail	Fasteners Total						Cost Index 1=Lowest; 10=Highest
				To Plates/Stud		To Truss/Rafter		Stud		
				Qty	Type	Qty	Type	Qty	Type	
2020	1	LUGT2	2-Ply	2	8d (0.148") x 3"	16	8d (0.148") x 3"	14	8d (0.148") x 3"	1
3500	1	LUGT3	3-Ply	4	16d (0.148") x 3-1/4"	12	WS25 (1/4" x 2-1/2")	24	16d (0.148") x 3-1/4"	2
3945	1	MUGT15	For wood-to-wood, install with PHD2A underside of top plate with 5/8" threaded rod	1	5/8" Threaded Rod	22	10d (0.148") x 3"	--	--	3
4725	1	LUGT4	--	5	16d (0.148") x 3-1/4"	16	WS3 (1/4" x 3")	32	16d (0.148") x 3-1/4"	4
6040	1	RUSC	RUSC shall be installed in pairs. Allowable loads are per pair of RUSCs.	--	--	16	WS3 (1/4" x 3")	16	WS3 (1/4" x 3")	5
9575	1	HUGT2	2-Ply	2	5/8" Threaded Rod	8	8d (0.148") x 3"	2	HTT45	6
9860	1	HUGT3	3-Ply. For wood-to-wood, install with (2) HTT45 each side of stud	2	5/8" Threaded Rod	8	8d (0.148") x 3"	2	HTT45	7
		HUGT4	4-Ply. For wood-to-wood, install with (2) HTT45 each side of stud	2	5/8" Threaded Rod	8	8d (0.148") x 3"	2	HTT45	8



**Typical RUSC installation**



**Typical LUGT3 installation (LUGT4 similar)**



**Typical LUGT2 installation**

This publication is to be used in conjunction with MiTek USP Product Catalog

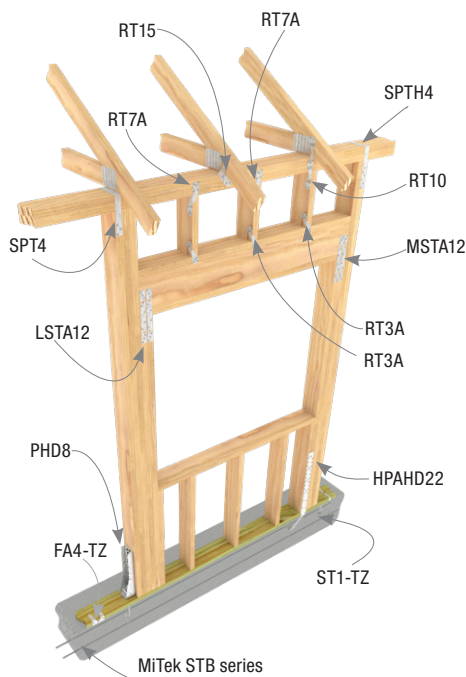
**Customer Service & Technical Assistance**

Phone: 1-800-328-5934 • Fax: 1-952-898-8605 • Email: USPcustomerservice@mii.com

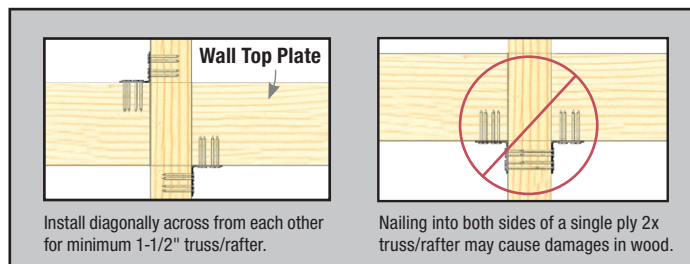
# Connector Selector Guide

## Header to Studs

DF/SP Allowable Loads	Qty of Connectors	MiTek USP Stock No.	Installation Detail	Min. Header	Fasteners Total		Cost Index 1=Lowest; 10=Highest
					Qty	Type	
820	(1) 12" Piece	RS150 <sup>1</sup>	--	7.25"	8	10d (0.148") x 3"	10
930	1	LSTA12	--	7.25"	10	10d (0.148") x 3"	1
935	1	MSTA12	--	7.25"	10	10d (0.148") x 3"	2
1025	(1) 18" Piece	RS150	--	9.25"	10	10d (0.148") x 3"	10
1230	(1) 24" Piece	RS150	--	11.25"	12	10d (0.148") x 3"	10
1235	1	LSTA18	--	9.25"	14	10d (0.148") x 3"	3
1235	1	LSTA21	--	11.25"	16	10d (0.148") x 3"	5
1310	1	MSTA18	--	9.25"	14	10d (0.148") x 3"	4
1500	1	MSTA21	--	11.25"	16	10d (0.148") x 3"	6
1860	2	LSTA12	--	7.25"	20	10d (0.148") x 3"	7
1870	2	MSTA12	--	7.25"	20	10d (0.148") x 3"	8
2050	(2) 18" Pieces	RS150 <sup>1</sup>	Install diagonally across plate from each other, to achieve twice the load (using identical anchors). See detail	9.25"	20	10d (0.148") x 3"	10
2460	(2) 24" Pieces	RS150 <sup>1</sup>	Install diagonally across plate from each other, to achieve twice the load (using identical anchors). See detail	11.25"	24	10d (0.148") x 3"	10
2470	2	LSTA18	--	9.25"	28	10d (0.148") x 3"	9
2470	2	LSTA21	--	11.25"	32	10d (0.148") x 3"	10
2620	2	MSTA18	--	9.25"	28	10d (0.148") x 3"	10
3000	2	MSTA21	--	11.25"	32	10d (0.148") x 3"	10



**Window/Door Opening**



**Anchor installation to achieve twice the load  
(using two identical anchors)**

This publication is to be used in conjunction with MiTek USP Product Catalog

**Customer Service & Technical Assistance**

Phone: 1-800-328-5934 • Fax: 1-952-898-8605 • Email: USPcustomerservice@mii.com