
MiTek[®]

SERVICE BULLETIN

Document ID:

SB293

Title:

***Hornet II*[™] - Uninstalling the DC Link**

Affected machinery: *Hornet II* saw

Distribution: All customers with affected machinery

Applies to: All *Hornet II* saws with a DC link installed

CAUTION:

MiTek recommends printing this document in high resolution using color ink. Many of the graphics may be unclear and may create an unsafe condition if this recommendation is not followed.

MiTek Automation
Phone: 800-523-3380
Fax: 636-328-9218
www.mitek-us.com

Part # and Rev.	SB293
Print Date	30 April 2025
Effectivity	Frames prior to 33
Revision Date	
Revised By	
Orig. Release Date	30 April 2025
Created By	A. Moll
Approved By	D. Brames

Purpose and Scope

This service bulletin instructs how to remove a the DC link between the servos for the pusher and rotation table from the *Hornet II* main electrical enclosure. The DC link allows for load balancing capabilities that do not apply to the Hornet II configuration and should be removed per the manufacturer's recommendation.

Overview



Supplies Needed



- Multimeter

Lockout/Tagout Instructions

Electrical Lockout/Tagout Procedure

The lockout/tagout instructions for the electrical systems will be referenced as necessary in this document. Service Bulletin instructions start on [page 3](#).

Working on a Machine Outside the Machine's Main Electrical Enclosure

	 WARNING
	<p>ELECTROCUTION HAZARD.</p> <p>All electrical work must be performed by a qualified electrician.</p> <p>Verify that all power to the machine has been turned off and follow approved lockout/tagout safety procedures before performing any maintenance.</p> <p>If it is absolutely necessary to troubleshoot an energized machine, follow NFPA 70E for proper procedures and personal protective equipment.</p> <p>When the disconnect switch is off, there is still live power within the disconnect switch's enclosure. Always turn off the power at the building's power source to the equipment before opening this electrical enclosure.</p>

1. If applicable, close machine software and shut down the PC using the **Power > Shut down** method in Windows.
2. Engage an E-stop on the machine.
3. Turn the disconnect switch handle to the Off position. See [Figure 1](#).
4. Attach a lock and tag that meet OSHA requirements for lockout/tagout to the electrical service entry panel.

5. Open the door to the enclosure to which you need access. Using a multimeter, verify that the power is off.

Figure 1: Disconnect Switch



Procedure

Preparing the Saw



1. Lockout/tagout the electrical of the machine using the [Lockout/Tagout Instructions on page 2](#).
2. After utilizing the main disconnect switch, the enclosure will still have DC power due to a battery backup. Wait 5 minutes to ensure the servo amplifier capacitors are fully discharged.

Removing the DC Link

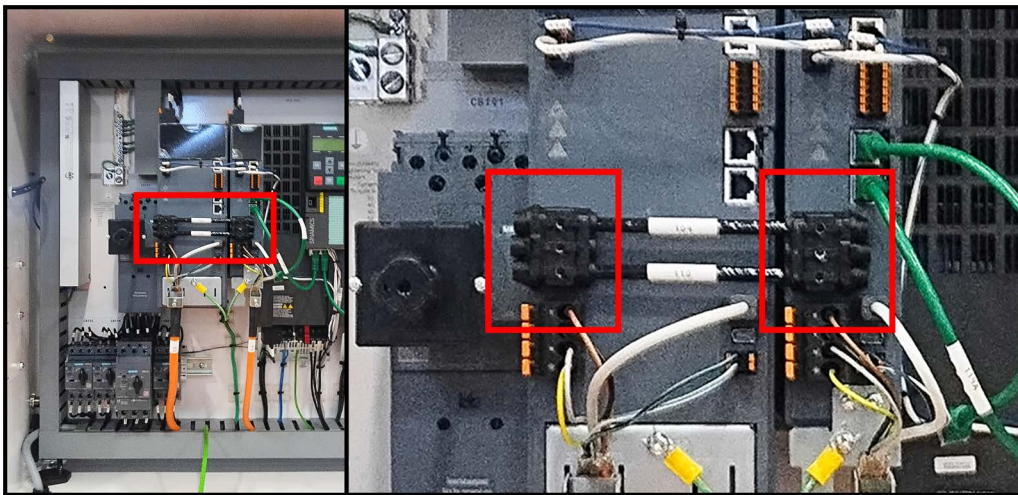
1. With power locked out as previously described, open the main electrical enclosure as seen in [Figure 2](#).

Figure 2: Electrical Enclosure



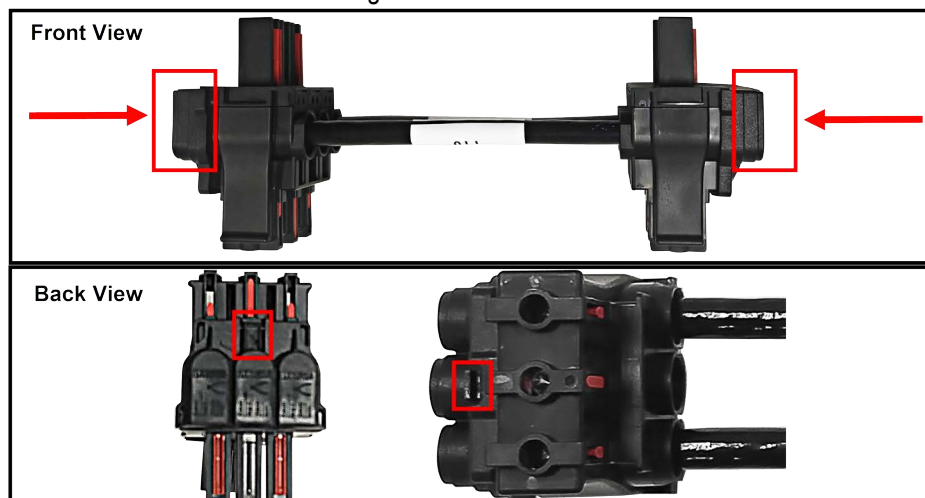
2. Locate the DC link to be removed. See [Figure 3](#).
3. Using a multimeter set to DC, verify that no voltage is detected at the DC link.
 - a) If no voltage is detected, proceed to Step 4.
 - b) If voltage is detected, continue to wait for the battery backup to discharge and test again. Do not proceed until no voltage is detected.
 - If voltage continues to be detected at the DC link, contact **MiTek Automation Support at 1-800-523-3380** for assistance.
4. Locate the ends of the DC Link as seen in [Figure 3](#). The DC link is located on the left side of the main electrical enclosure.

Figure 3: DC Link Detail



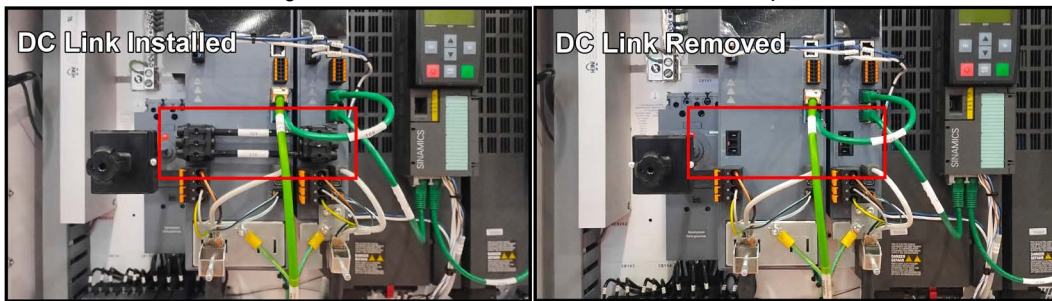
5. Starting on either end of the DC link, firmly press in on the tab (see [Figure 4](#)) and pull up while gently wiggling on the end of the DC link to loosen.
6. Repeat Step 5 for the opposite end of the DC link and remove once loose.

Figure 4: Removal Tabs



7. After the DC link has been removed, remove any lockout/tagout devices and resume normal operation.

Figure 5: DC Link Installed and Removed Example



END OF SERVICE BULLETIN