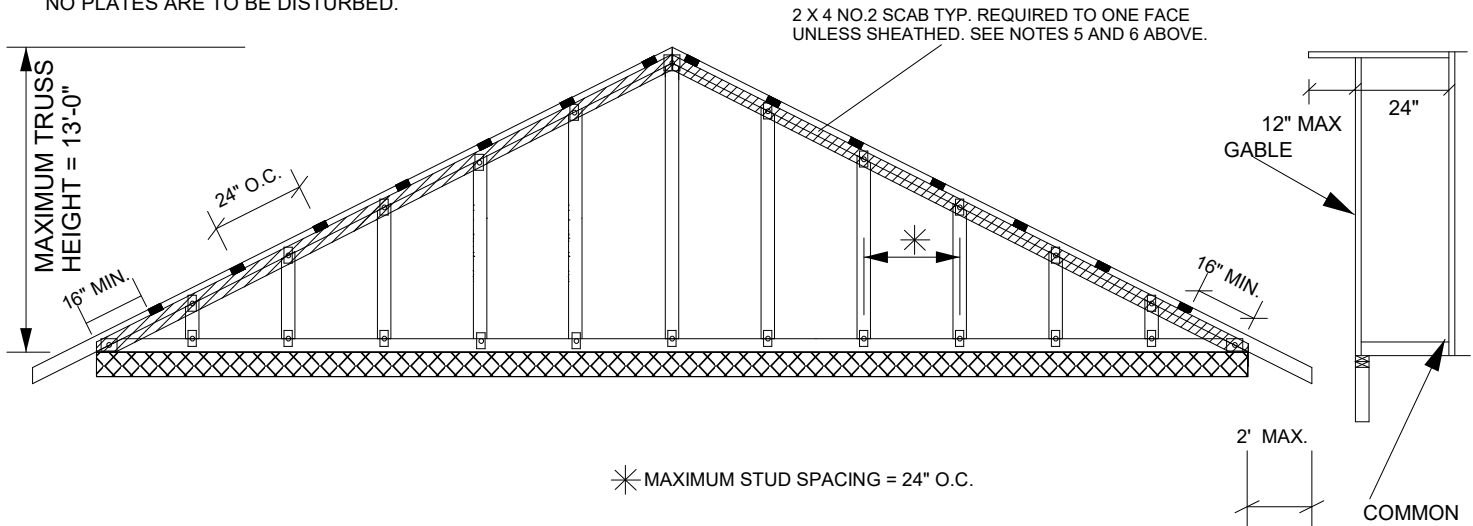




**NOTES:**

1. THE END DISTANCE, EDGE DISTANCE, AND SPACING OF NAILS SHALL BE SUCH AS TO AVOID SPLITTING OF THE WOOD.
2. LUMBER MUST BE CUT CLEANLY AND ACCURATELY AND THE REMAINING WOOD MUST BE UNDAMAGED.
3. THIS REPAIR IS TO BE USED FOR SINGLE PLY TRUSSES IN THE 2X ORIENTATION ONLY.
4. CONNECTOR PLATES MUST REMAIN FULLY EMBEDDED AND UNDISTURBED.
5. 2 X 4 NO.2 SCAB REQUIRED TO ONE FACE OF TOP CHORD OF TRUSS WITH ONE ROW OF 10d (0.131 X 3") NAILS SPACED 6" O.C.
6. SCAB SHOWN MAY BE OMITTED IF THE OUTSIDE FACE OF THE GABLE IS SHEATHED WITH (MIN) 7/16" OSB OR PLYWOOD.
7. SEE MITEK STANDARD GABLE END DETAILS FOR WIND BRACING REQUIREMENTS.

3 1/2" WIDE X 1 1/2" DEEP NOTCH IN TOP CHORD 24" O.C. AS SHOWN  
LUMBER TO BE CUT CLEANLY AND ACCURATELY,  
NO PLATES ARE TO BE DISTURBED.



**TRUSS CRITERIA**

MAXIMUM SPAN: 50'  
 SPACING = 24" O.C.  
 PITCH BETWEEN 3/12 AND 12/12  
 LOADING : 40-10-0-10 (MAX)  
 DURATION FACTOR : 1.15  
 TOP CHORD : 2x4 (NO 2 MIN)  
 BEARING : CONTINUOUS  
 STUD SPACING : 24" O.C. (MAX)  
 CATEGORY II BUILDING  
 ASCE7-98, ASCE7-02, ASCE7-05 -100 MPH  
 ASCE7-10, ASCE 7-16 - 125 MPH  
 TRUSSES NOT FITTING THESE CRITERIA SHALL BE EXAMINED INDIVIDUALLY.

REFER TO INDIVIDUAL TRUSS DESIGN  
FOR PLATE SIZES AND LUMBER GRADES