

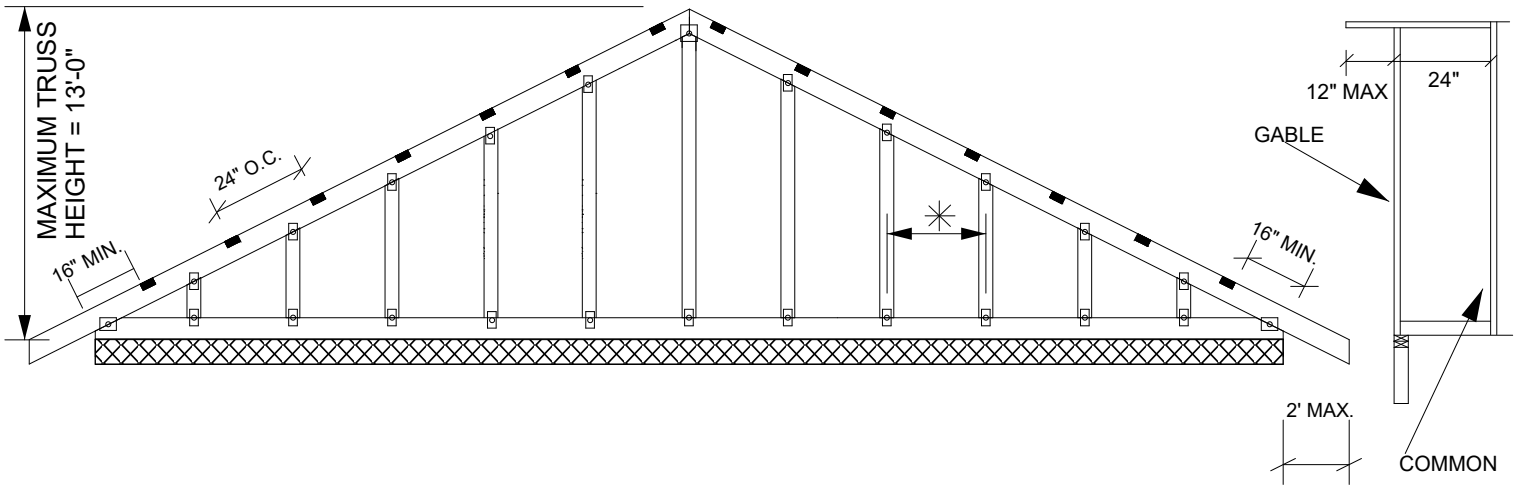


NOTES:

1. LUMBER MUST BE CUT CLEANLY AND ACCURATELY AND THE REMAINING WOOD MUST BE UNDAMAGED.
2. THIS REPAIR IS TO BE USED FOR SINGLE PLY TRUSSES IN THE 2X₂ ORIENTATION ONLY.
3. CONNECTOR PLATES MUST REMAIN FULLY EMBEDDED AND UNDISTURBED
4. SEE MITEK STANDARD GABLE END DETAILS FOR WIND BRACING REQUIREMENTS.

3 1/2" WIDE X 1 1/2" DEEP NOTCH IN TOP CHORD 24" O.C. AS SHOWN
 LUMBER TO BE CUT CLEANLY AND ACCURATELY,
 NO PLATES ARE TO BE DISTURBED.
 NO REPAIR NEEDED.

* MAXIMUM STUD SPACING = 24" O.C.



TRUSS CRITERIA

MAXIMUM SPAN: 50'
 SPACING = 24" O.C.
 PITCH BETWEEN 3/12 AND 12/12
 LOADING : 40-10-0-10 (MAX)
 DURATION FACTOR : 1.15
 TOP CHORD : 2x6 (NO 2 MIN)
 BEARING : CONTINUOUS
 STUD SPACING : 24" O.C. (MAX)
 CATEGORY II BUILDING
 ASCE7-98, ASCE7-02, ASCE7-05 -100 MPH
 ASCE7-10, ASCE 7-16 - 125 MPH
 TRUSSES NOT FITTING THESE CRITERIA SHALL BE EXAMINED INDIVIDUALLY.

REFER TO INDIVIDUAL TRUSS DESIGN
 FOR PLATE SIZES AND LUMBER GRADES