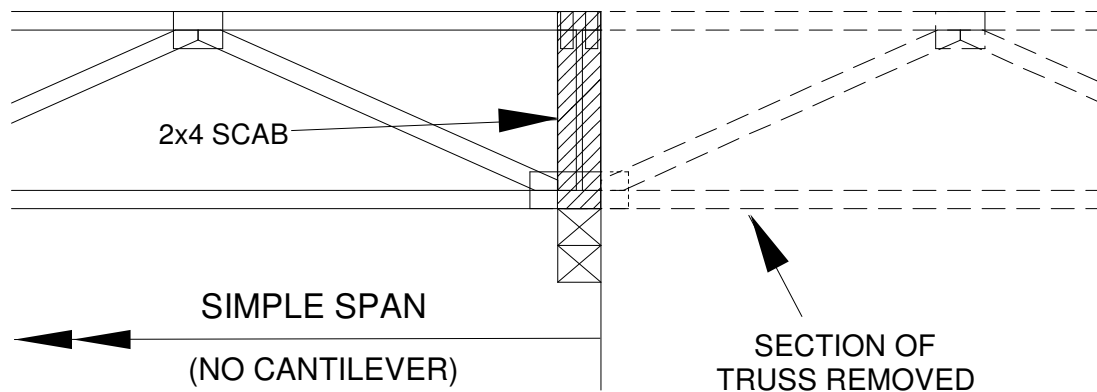


## NOTES:

1. THIS IS A SPECIFIC REPAIR DETAIL TO BE USED ONLY FOR ITS ORIGINAL INTENTION. THIS REPAIR DOES NOT IMPLY THAT THE REMAINING PORTION OF THE TRUSS IS UNDAMAGED. THE ENTIRE TRUSS SHALL BE INSPECTED TO VERIFY THAT NO FURTHER REPAIRS ARE REQUIRED. WHEN THE REQUIRED REPAIRS ARE PROPERLY APPLIED, THE TRUSS WILL BE CAPABLE OF SUPPORTING THE LOADS INDICATED.
2. ALL MEMBERS MUST BE RETURNED TO THEIR ORIGINAL POSITIONS BEFORE APPLYING REPAIR AND HELD IN PLACE DURING APPLICATION OF THE REPAIR.
3. THE END DISTANCE, EDGE DISTANCE, AND SPACING OF NAILS SHALL BE SUCH AS TO AVOID UNUSUAL SPLITTING OF THE WOOD.
4. WHEN NAILING THE PLYWOOD GUSSETS AND/OR SCABS, THE USE OF A BACKUP WEIGHT IS RECOMMENDED TO AVOID LOOSENING OF THE CONNECTOR PLATES AT THE JOINTS OR SPLICES.
5. LUMBER AND CONNECTOR PLATES MUST BE CUT CLEANLY AND ACCURATELY AND THE REMAINING PLATE MUST BE FULLY IMBEDDED AND UNDISTURBED.
6. ADD 2x4 SPF NO.2 OR BETTER VERTICAL SCAB TO ONE SIDE OF THE REMAINING TRUSS OVER THE TOP OF THE BEARING. ATTACH W/ 10d (0.148" X 3") NAILS SPACED 4" O.C.

THIS REPAIR IS VALID ONLY FOR TRUSSES DESIGNED WITH THE TOP CHORD CUT OVER THE INTERIOR BEARING. DO NOT USE THIS DETAIL FOR CONTINUOUS SPAN FLOOR TRUSS DESIGNS!



## IMPORTANT

This repair to be used only with single ply trusses designed with a maximum spacing of 24" o.c. and 40-10-0-5 loading in the 4X\_ orientation only. Trusses not fitting these criteria should be examined individually.

REFER TO INDIVIDUAL TRUSS DESIGN  
FOR PLATE SIZES AND LUMBER GRADES