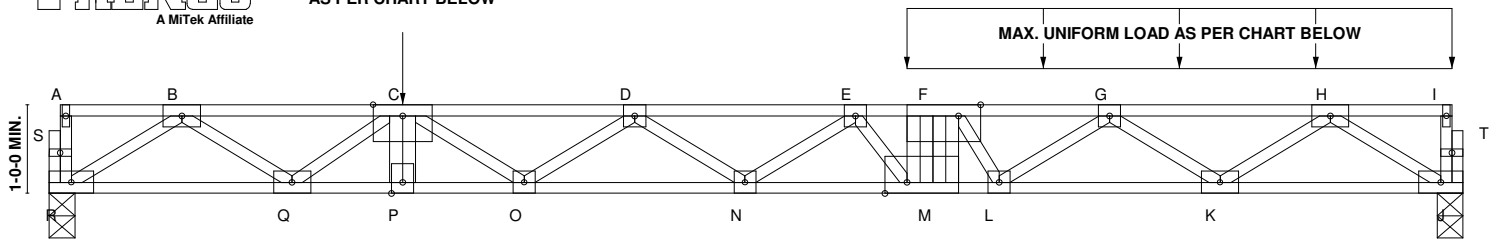


MiTek USA, Inc.

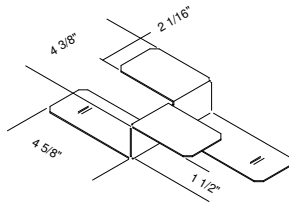
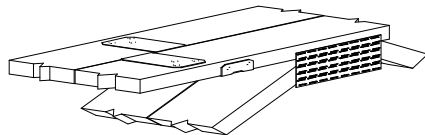


MAX. CONCENTRATED LOAD AS PER CHART BELOW

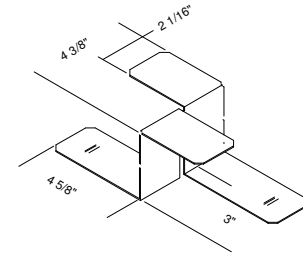
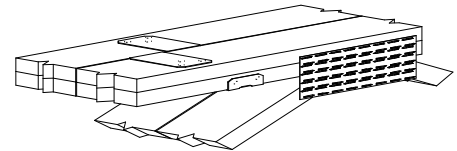
REFER TO INDIVIDUAL TRUSS DESIGN FOR PLATE SIZES AND LUMBER GRADES



FTC32 / FTC1



FTC32-2 / FTC2



USP FLOOR TRUSS CLIPS - FTC SERIES

TRUSS SIZE	USP STOCK NO.	MAX. CONC. LOAD (lbs.) PER CLIP		MAX. TRANSFER LOAD (lbs.) PER CLIP		MAX. UNIFORM LOAD (plf) 24" O.C. SPACING	
		SP / DOUG-FIR	SPF	SP / DOUG-FIR	SPF	SP / DOUG-FIR	SPF
3 x 2	FTC32	1360	1180	680	590	680	590
(2) 3 x 2	FTC32-2	1360	1180	680	590	680	590
4 x 2	FTC1	1730	1500	865	750	865	750
(2) 4 x 2	FTC2	1730	1500	865	750	865	750

TRUSS SIZE	USP STOCK NO.	FASTENER SCHEDULE
3 x 2	FTC32	(10) 10d x 1-1/2"
(2) 3 x 2	FTC32-2	(10) 10d x 1-1/2"
4 x 2	FTC1	(10) 10d
(2) 4 x 2	FTC2	(10) 10d

FOLLOW USP INSTALLATION INSTRUCTIONS. USE ALL SPECIFIED FASTENERS.

MAX. UNIFORM LOAD (plf) REQUIRES FTC CLIPS TO BE PLACED AT A 24" O.C. MAX. SPACING ALONG THE LOADED CHORD.

10d x 1-1/2" NAILS ARE 9 GAUGE (0.148" DIAMETER X 1-1/2" LONG)