

MiTek®

HOMEBUILDING SOLUTIONS

CONNECTOR PRODUCTS



BETTER TECHNOLOGY.
BETTER BUILDING.

- Connector Plates
- Truss Bracing
- Restraining Products



MT20 - 20 GAUGE

BOX

Item Number	Plate Size	Ship Weight	Pcs/ Unit	Units/ Pallet	Item Number	Plate Size	Ship Weight	Pcs/ Unit	Units/ Pallet
20-010030	1 x 3	69.2	2004	30	20-060060	6 x 6	54.7	132	30
20-010040	1 x 4	66.8	1452	30	20-060080	6 x 8	55.2	100	36
20-015030	1.5 x 3	67.1	1296	30	20-060100	6 x 10	66.3	96	36
20-015040	1.5 x 4	64.6	936	30	20-060120	6 x 12	62.9	76	36
20-020030	2 x 3	67.9	984	30	20-060140	6 x 14	69.6	72	36
20-020040	2 x 4	60.2	654	30	20-060160	6 x 16	53.0	48	36
20-020050	2 x 5	61.4	534	30	20-060180	6 x 18	59.6	48	36
20-020060	2 x 6	55.5	402	30	20-060440	6 x 44	36.4	12	36
20-020080	2 x 8	55.2	300	30	20-070080	7 x 8	54.1	84	36
20-025040	2.5 x 4	59.8	520	30	20-070100	7 x 10	64.4	80	36
20-025050	2.5 x 5	59.2	412	30	20-070120	7 x 12	58.0	60	36
20-025060	2.5 x 6	55.2	320	30	20-070140	7 x 14	51.8	46	36
20-030030	3 x 3	62.1	600	30	20-070160	7 x 16	54.1	42	36
20-030040	3 x 4	58.0	420	30	20-070180	7 x 18	60.9	42	36
20-030050	3 x 5	57.3	332	30	20-070440	7 x 44	42.5	12	36
20-030060	3 x 6	53.8	260	30	20-080080	8 x 8	61.8	84	36
20-030070	3 x 7	53.1	220	30	20-080090	8 x 9	70.0	84	36
20-030080	3 x 8	53.0	192	30	20-080100	8 x 10	69.9	76	36
20-030100	3 x 10	48.3	140	30	20-080120	8 x 12	70.7	64	36
20-030120	3 x 12	49.7	120	30	20-080140	8 x 14	59.3	46	36
20-040040	4 x 4	60.7	330	30	20-080160	8 x 16	61.8	42	36
20-040050	4 x 5	60.0	261	30	20-080180	8 x 18	69.6	42	36
20-040060	4 x 6	58.0	210	30	20-080200	8 x 20	69.9	38	36
20-040070	4 x 7	58.0	180	30	20-080440	8 x 44	48.6	12	36
20-040080	4 x 8	55.2	150	30	20-100100	10 x 10	55.2	48	36
20-040100	4 x 10	55.2	120	30	20-100120	10 x 12	66.3	48	36
20-040120	4 x 12	56.3	102	30	20-100140	10 x 14	70.9	44	36
20-040140	4 x 14	69.6	108	36	20-100160	10 x 16	58.9	32	36
20-040160	4 x 16	57.4	78	36	20-100180	10 x 18	66.3	32	36
20-040440	4 x 44	24.3	12	36	20-100200	10 x 20	69.0	30	36
20-050050	5 x 5	57.5	200	30	20-100440	10 x 44	60.7	12	36
20-050060	5 x 6	55.2	160	30	20-120120	12 x 12	53.0	32	36
20-050070	5 x 7	52.3	130	30	20-120140	12 x 14	61.8	32	36
20-050080	5 x 8	50.6	110	30	20-120160	12 x 16	53.0	24	36
20-050100	5 x 10	57.5	100	36	20-120180	12 x 18	59.6	24	36
20-050120	5 x 12	66.3	96	36	20-120200	12 x 20	66.3	24	36
20-050140	5 x 14	70.9	88	36	20-120440	12 x 44	72.9	12	36
20-050160	5 x 16	55.2	60	36					
20-050440	5 x 44	30.4	12	36					



MT20 - 20 GAUGE

BULK - BOX

Item Number (K)	Plate Size	Ship Weight	Pcs/Unit (Pallet)	Item Number (K)	Plate Size	Ship Weight	Pcs/Unit (Pallet)
122-010020	1 x 2	1,840.3	80000	122-020030	2 x 3	1,449.3	21000
122-010030	1 x 3	1,418.2	41100	122-020040	2 x 4	1,297.4	14100
122-015030	1.5 x 3	1,604.5	31000	122-020050	2 x 5	1,265.2	11000
122-015040	1.5 x 4	1,518.3	22000	122-025050	2.5 x 5	1,294.0	9000
				122-030030	3 x 3	1,428.5	13800

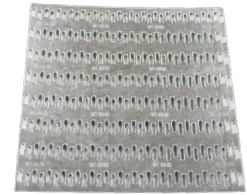


MT20 - 20 GAUGE

BANDED - PALLET

Item Number	Plate Size	Packs/ Layer	No. of Layers	Ship Weight	Pcs/Unit (Pallet)	Item Number	Plate Size	Packs/ Layer	No. of Layers	Ship Weight	Pcs/Unit (Pallet)
22-030040	3 x 4	110	10	3,036.5	22000	22-050050	5 x 5	90	6	3,105.5	10800
22-030050	3 x 5	90	10	3,105.5	18000	22-050060	5 x 6	70	6	2,898.5	8400
22-030060	3 x 6	70	10	2,898.5	14000	22-050070	5 x 7	60	6	2,898.5	7200
22-030070	3 x 7	60	10	2,898.5	12000	22-050080	5 x 8	50	6	2,760.5	6000
22-030080	3 x 8	50	10	2,760.5	10000	22-050100	5 x 10	40	6	2,760.5	4800
22-030100	3 x 10	40	10	2,760.5	8000	22-050120	5 x 12	30	6	2,484.4	3600
22-030120	3 x 12	30	10	2,484.4	6000						
22-040040	4 x 4	110	7	2,834.1	15400	22-060060	6 x 6	70	5	2,898.5	7000
22-040050	4 x 5	90	7	2,898.5	12600	22-060080	6 x 8	50	5	2,760.5	5000
22-040060	4 x 6	70	7	2,705.3	9800	22-060100	6 x 10	40	5	2,760.5	4000
22-040070	4 x 7	60	7	2,705.3	8400	22-060120	6 x 12	30	5	2,484.4	3000
22-040080	4 x 8	50	7	2,576.5	7000						
22-040100	4 x 10	40	7	2,576.5	5600						
22-040120	4 x 12	30	7	2,318.8	4200						

MT18HS - HIGH STRENGTH 18 GAUGE



BOX

Item Number	Plate Size	Ship Weight	Pcs/ Unit	Units/ Pallet	Item Number	Plate Size	Ship Weight	Pcs/ Unit	Units/ Pallet
17-030080	3 x 8	48.9	136	30	17-090100	9 x 10	64.2	48	36
17-030100	3 x 10	57.5	128	30	17-090160	9 x 16	51.8	24	36
17-030120	3 x 12	64.7	120	30					
17-030160	3 x 16	57.5	80	36	17-100100	10 x 10	71.9	48	36
17-030440	3 x 44	39.5	20	36	17-100120	10 x 12	71.9	40	36
					17-100140	10 x 14	67.1	32	36
17-050100	5 x 10	71.3	96	36	17-100160	10 x 16	57.5	24	36
17-050120	5 x 12	71.3	80	36	17-100180	10 x 18	59.3	22	36
17-050140	5 x 14	75.5	72	36	17-100200	10 x 20	65.9	22	36
17-050160	5 x 16	64.7	54	36	17-100440	10 x 44	79.1	12	36
17-070100	7 x 10	69.2	66	36	17-120160	12 x 16	57.5	20	36
17-070120	7 x 12	60.4	48	36	17-120200	12 x 20	64.7	18	36
17-070140	7 x 14	64.6	44	36	17-120440	12 x 44	94.9	12	36
17-070160	7 x 16	57	33	36					
17-070180	7 x 18	64.2	34	36					

MT20HS - HIGH STRENGTH 20 GAUGE



BOX

Item Number	Plate Size	Ship Weight	Pcs/ Unit	Units/ Pallet	Item Number	Plate Size	Ship Weight	Pcs/ Unit	Units/ Pallet
29-030080	3 x 8	53.0	192	30	29-080080	8 x 8	61.9	84	36
29-030100	3 x 10	48.3	140	30	29-080100	8 x 10	69.9	76	36
29-030120	3 x 12	49.7	120	30	29-080120	8 x 12	70.7	64	36
					29-080140	8 x 14	59.3	46	36
29-040120	4 x 12	56.3	102	30	29-080440	8 x 44	48.6	12	36
29-050100	5 x 10	57.5	100	36	29-100120	10 x 12	66.3	48	36
29-050120	5 x 12	66.3	96	36	29-100140	10 x 14	70.9	44	36
29-050140	5 x 14	70.3	88	36	29-100440	10 x 44	60.7	12	36
29-060120	6 x 12	62.9	76	36	29-120120	12 x 12	53.0	32	36
29-060140	6 x 14	69.6	72	36	29-120140	12 x 14	61.8	32	36
29-060160	6 x 16	53.0	48	36	29-120160	12 x 16	53.0	24	36
29-060440	6 x 44	36.4	12	36	29-120200	12 x 20	66.0	24	36
					29-120440	12 x 44	72.9	12	36
29-070080	7 x 8	54.1	84	84					
29-070100	7 x 10	64.4	80	36					
29-070120	7 x 12	58.0	60	36					
29-070140	7 x 14	51.8	46	36					
29-070440	7 x 44	42.5	12	36					

MT18AHS - ADVANCED HIGH STRENGTH 18 GAUGE



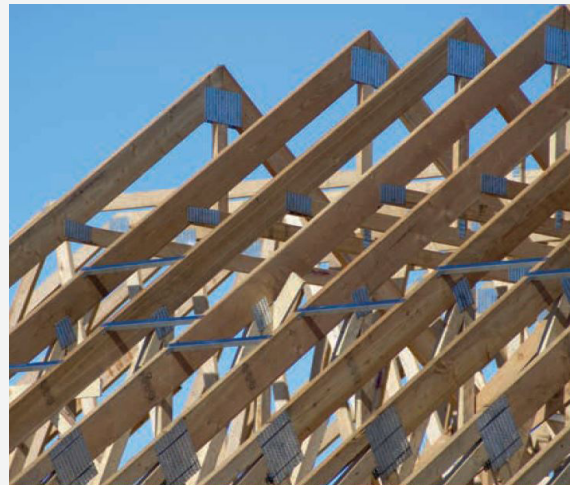
BOX

Item Number	Plate Size	Ship Weight	Pcs/ Unit	Units/ Pallet
88-030060	3 x 6	64.7	240	30
88-030080	3 x 8	48.9	136	30
88-030100	3 x 10	57.5	128	30
88-030120	3 x 12	64.7	120	30
88-030140	3 x 14	62.9	100	36
88-030160	3 x 16	57.5	80	36
88-030180	3 x 18	61.5	76	36
88-030440	3 x 44	39.5	20	36
88-040080	4 x 8	48.9	102	30
88-040100	4 x 10	65.9	110	30
88-040120	4 x 12	71.9	100	30
88-040140	4 x 14	72.1	86	36
88-040160	4 x 16	63.3	66	36
88-040440	4 x 44	42.2	16	36
88-050080	5 x 8	65.9	110	36
88-050100	5 x 10	71.9	96	36
88-050120	5 x 12	71.9	80	36
88-050140	5 x 14	75.5	72	36
88-050160	5 x 16	64.7	54	36
88-050180	5 x 18	64.7	48	36
88-050440	5 x 44	39.5	12	36
88-060080	6 x 8	63.3	88	36
88-060100	6 x 10	68.3	76	36
88-060120	6 x 12	64.7	60	36
88-060140	6 x 14	55.3	44	36
88-060160	6 x 16	69.0	48	36
88-060180	6 x 18	74.4	46	36
See 88-060440*	6 x 24	NA	NA	NA
88-060440	6 x 44	47.4	12	36
88-070080	7 x 8	70.4	84	36
88-070100	7 x 10	69.2	66	36
88-070120	7 x 12	60.4	48	36
88-070140	7 x 14	64.6	44	36
88-070160	7 x 16	57.0	34	36
88-070180	7 x 18	64.2	34	36
See 88-070440*	7 x 22	NA	NA	NA
88-070440	7 x 44	55.4	12	36

Item Number	Plate Size	Ship Weight	Pcs/ Unit	Units/ Pallet
88-080100	8 x 10	57.5	48	36
88-080120	8 x 12	69.0	48	36
88-080140	8 x 14	67.1	40	36
88-080160	8 x 16	46.0	24	36
88-080180	8 x 18	51.8	24	36
See 88-080440*	8 x 24	NA	NA	NA
88-080440	8 x 44	63.3	12	36
88-090100	9 x 10	64.7	48	36
88-090120	9 x 12	64.7	40	36
88-090140	9 x 14	64.2	34	36
88-090160	9 x 16	51.8	24	36
88-090180	9 x 18	58.2	24	36
See 88-090440*	9 x 22	NA	NA	NA
88-090440	9 x 44	71.2	12	36
88-100100	10 x 10	71.9	48	36
88-100120	10 x 12	71.9	40	36
88-100140	10 x 14	67.1	32	36
88-100160	10 x 16	57.5	24	36
88-100180	10 x 18	59.3	22	36
See 88-100440*	10 x 22	NA	NA	NA
88-100440	10 x 44	79.1	12	36
88-120140	12 x 14	60.4	24	36
88-120160	12 x 16	57.5	20	36
88-120180	12 x 18	64.7	20	36
88-120200	12 x 20	64.7	18	36
See 88-120440*	12 x 22	NA	NA	NA
88-120440	12 x 44	94.9	12	36

*44" bar stock plates can be cut down to smaller sizes

*44" bar stock plates can be cut down to smaller sizes



T PLATE - 18 GAUGE HIGH STRENGTH



BOX

Item Number	Plate Size	Ship Weight	Pcs/ Unit	Units/ Pallet
12-060100	6 x 10	54.6	76	36
12-060120	6 x 12	48.5	60	36
12-070100	7 x 10	53.1	66	36
12-070120	7 x 12	43.1	48	36

TL20 PIGGYBACK PLATE



BOX

Item Number	Plate Size	Ship Weight	Pcs/Unit (Box)	Boxes/ Skid	Units/ Pallet
120-020080Piggy	2 x 8	55.2	300	30	30
120-030080Piggy	3 x 8	48.3	175	30	24

MT20 BEVEL PLATE



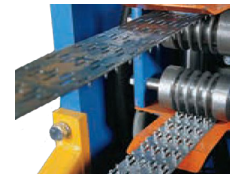
BOX

Item Number	Plate Size/ Orientation	Ship Weight	Pcs/ Unit	Units/ Pallet
12-040080RH	4 x 8/RH	56.3	204	36
12-040080LH	4 x 8/LH	56.3	204	36
12-050105RH	5 x 10.5/RH	52.9	120	36
12-050105LH	5 x 10.5/LH	52.9	120	36
12-060120RH	6 x 12/RH	59.6	96	36
12-060120LH	6 x 12/LH	59.6	96	36

Please order equal quantities of LH and RH

MT20 COIL NAILS

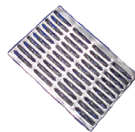
For use with MiTek®
JackRabbit® Press



PALLET

Item Number	Plate Width/ Length	Ship Weight	Coils/ Pallet	Units/ Pallet
20-010COIL	1.0" x 183'	610.0	24	1
20-020COIL	2.0" x 175'	585.0	12	1
20-030COIL	3.0" x 132'	448.0	8	1

GRASSHOPPER™ TOP PLATE TIE



BOX

Item Number	Plate Size	Ship Weight	Pcs/ Unit	Units/ Pallet
13-2H	3.44 x 2.5	50.0	400	30
13-4H	3.44 x 5	50.0	200	30
13-5H	3.44 x 6.25	62.0	200	30
13-6H	3.44 x 7.5	66.0	176	30
13-7H	3.44 x 8.75	65.0	150	30
13-8H	3.44 x 10	50.0	100	30
13-10H	3.44 x 12.5	62.0	100	30
13-14H	3.44 x 17.5	65.0	75	30
13-16H	3.44 x 20	50.0	50	30

SPECIALTY PLATES

Impaling Clips & Industrial

BOX

Item Number	Plate Size/ Description	Ship Weight	Pcs/Unit (Box)	Units/ Pallet
150-015080	Seat Plate 1.5 x 8	20.0	300	36
18-014023	1.4 x 2.3 18 Ga ST Nail	46.7	1008	36
18-014047	1.4 x 4.7 18 Ga ST Nail	25.0	252	30
18-042047	4.2 x 4.7 18 Ga St Nail	56.2	190	30

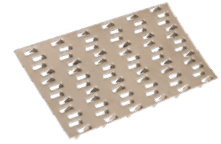
ST Nail



Seat Plate



MT20 STAINLESS STEEL



SOLD BY THE PIECE

Item Number	Plate Size	Ship Weight	Item Number	Plate Size	Ship Weight
28-020040	2 x 4	0.09	28-060060	6 x 6	0.41
28-020060	2 x 6	0.14	28-060080	6 x 8	0.55
28-030040	3 x 4	0.14	28-060100	6 x 10	0.69
28-030060	3 x 6	0.21	28-060120	6 x 12	0.83
28-030080	3 x 8	0.28	28-060140	6 x 14	0.97
28-030100	3 x 10	0.35	28-080080	8 x 8	0.74
28-040040	4 x 4	0.18	28-080100	8 x 10	0.92
28-040060	4 x 6	0.28	28-080120	8 x 12	1.10
28-040080	4 x 8	0.37	28-080140	8 x 14	1.29
28-040100	4 x 10	0.46	28-080160	8 x 16	1.47
28-040120	4 x 12	0.55			

Stainless Steel plates are manufactured to order. Because of this, orders must be firm and are non-cancellable/non-returnable. Production of the stainless plates occurs on approximately the 1st and 15th of each month using Grade 304, Type 2B Finish steel.

THE STABILIZER®



BOX

Item Number	Metal Web Size	Ship Weight	Pcs/Unit (Box)	Units/Pallet
31-16	16 inches OC	42.0	70	32
31-24	24 inches OC	45.0	50	32

HINGE PLATES - 18 GAUGE



BOX

Item Number	Plate Size/Description	Ship Weight	Pcs/Unit (Box)	Units/Pallet
33-023084	2.3 x 8.4 MTH18 Teeth on both halves	46.5	160	30
33-023084H	2.3 x 8.4 MTHNH18 Half teeth; Half nail-on	46.5	160	30

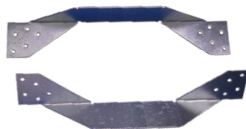
POSI-STRUT® METAL WEB



BOX

Item Number	Metal Web Size	Ship Weight	Pcs/Unit (Box)	Units/Pallet
30-100240	9.25 x 24 UV-10 Web	705.0	1120	2
30-120240	11.25 x 24 UV-12 Web	545.0	700	2
30-12i	11.875 x 25 UV-12i Web	510.0	700	2
30-140290	14 x 28.75 UV-14 Web	630.0	650	2
30-160280	16 x 28.25 UV-16 Web	484.0	440	2

STRAPS & TIE DOWNS



BOX

Item Number	Size & Description	Ship Weight	Pcs/Unit (Box)	Units/Pallet
32-013100	1.25 x 10.0 SW Frame	75.0	400	30
32-013130	1.25 x 13.0 FL Tie Down	73.0	300	30
32-015095	1.5 x 9.5 Uplift Clip	54.0	250	30
32-015125	1.5 x 12.5 WIN Clip Orig	36.0	250	30

20 GAUGE NAIL-ON PLATE



BOX

Item Number	Plate Size	Ship Weight	Pcs/Unit	Units/Pallet
150-LNP1X5	1 x 5	21.3	370	130
150-LNP2X4	2 x 4	21.2	230	130
150-LNP3X4	3 x 4	19.1	150	130
150-LNP3X5	3 x 5	20.7	120	130
150-LNP3X6	3 x 6	20.7	100	130
150-LNP3X7	3 x 7	19.3	80	130
150-LNP3X8	3 x 8	19.3	70	130
150-LNP3X9	3 x 9	18.6	60	130
150-LNP3X10	3 x 10	17.3	50	130
150-LNP4X8	4 x 8	18.4	50	130
150-LNP4X15	4 x 15	20.7	30	130
150-LNP5X6	5 x 6	20.7	60	130
150-LNP6X6	6 x 6	20.7	50	130
150-LNP6X8	6 x 8	16.6	30	130
150-LNP6X10	6 x 10	20.7	30	130
150-LNP6X12	6 x 12	16.6	20	130
150-LNP6X20	6 x 20	20.7	15	130
150-LNP6X24	6 x 24	33.0	20/Bundle	130
150-LNP6X48	6 x 48	33.1	10/Bundle	130
150-LNP8X10	8 x 10	18.4	20	130

NOTE ON WEIGHT:

The weights calculated throughout this catalog are based on the following industry standards:

20 gauge

.011502#/square inch

18 gauge

.014970#/square inch

16 gauge

.018400#/square inch

Due to allowable tolerances of steel thicknesses, actual weight(s) may vary.

MII.COM/CONNECTOR-PLATES