

FS / FSS Truss Field Splice Kits

Plated Truss

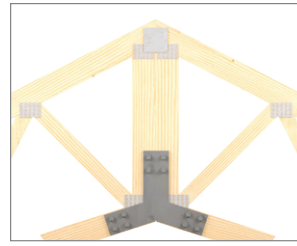
Job site splicing of long trusses is made easier with Truss Field Splice Kits. The FS and FSS (for scissors trusses) includes a pair of plates, bolts, nuts, and a Splice Clip for top chord alignment. Allowable loads are sometimes limited by tension in the net section of the wood. Choose the bottom chord size and species that will satisfy the tension requirement. Analyze tension in the web to determine the required size.

Materials: FS/FSS – See chart, bolts, and nuts included Splice Clip – 12 gauge

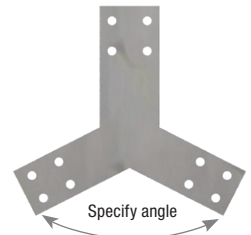
Finish: FS & FSS – Primer; Splice Clip – G90 galvanizing; Bolts – zinc plating

Installation:

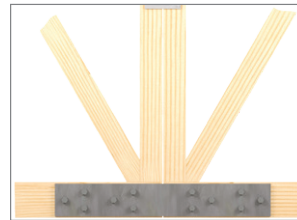
- Use all specified fasteners. See Product Notes, page 18.
- Position the two trusses, center one splice plate on the bottom chords and clamp in place for a drilling template. Install the Splice Clip at the top truss plate and fasten with (18) 10d (0.148" dia) x 1-1/2" nails. Drill through the bottom chord using splice plate as a template. Place splice plate on each side and bolt the connection firmly.



Typical FSS installation



FSS



Typical FS installation



FS



Splice Clip

MiTek USP Stock No.	Ref. No.	Steel Gauge	Truss Plies	Bolt Schedule		Chord Size	Allowable Loads (Lbs.) ^{1,2}			Code Ref.
				Qty	Size (in)		DF	SP	S-P-F	
							115%	115%	115%	
FS8B	--	7	1	8	3/4 x 3	2 x 6	4995	4845	3910	
						2 x 8	6695	6305	5240	
						2 x 10	7195	7565	6030	
FS8B-2	--	7	2	8	3/4 x 5	2 x 6	9995	9690	7820	
						2 x 8	13390	12615	10480	
						2 x 10	14130	14725	12140	
FS8B-3	--	7	3	8	3/4 x 7	2 x 6	14120	14540	11730	
						2 x 8	14145	14740	13070	
						2 x 10	14130	14725	13075	
FS12B	--	3	1	12	3/4 x 3	2 x 6	4995	4845	3910	
						2 x 8	6695	6305	5240	
						2 x 10	8320	7565	6510	
FS12B-2	--	3	2	12	3/4 x 5	2 x 6	9995	9690	7820	
						2 x 8	13390	12615	10480	
						2 x 10	16640	15125	13020	
FS12B-3	--	3	3	12	3/4 x 7	2 x 6	14990	14540	11730	
						2 x 8	20085	18920	15720	
						2 x 10	21770	22670	19530	
FSS8B	--	7	1	12	3/4 x 3	2 x 6	4995	4845	3910	
						2 x 8	6695	6305	5240	
						2 x 10	7195	7565	6030	
FSS8B-2	--	7	2	12	3/4 x 5	2 x 6	9995	9690	7820	
						2 x 8	13390	12615	10480	
						2 x 10	14130	14725	12140	
FSS12B	--	3	1	18	3/4 x 3	2 x 6	4995	4845	3910	
						2 x 8	6695	6305	5240	
						2 x 10	8320	7565	6510	
FSS12B-2	--	3	2	18	3/4 x 5	2 x 6	9995	9690	7820	
						2 x 8	13390	12615	10480	
						2 x 10	16640	15125	13020	

Plated Truss

Copyright © 2020 MiTek Industries, Inc. All Rights Reserved

1) Allowable loads shall not be increased for other load duration factors.
 2) Allowable loads are based on the lesser of the calculated bolt loads and the calculated wood tensile strength at the critical net section.
 3) Wood tensile strengths are based on the Ft of 450 psi for S-P-F, 575 psi for DF-L, and approximately 540 psi for SP; and increased by the size factors in accordance with the NDS®.
 4) Bolts shall conform to ASTM A 307 Grade A or better.