

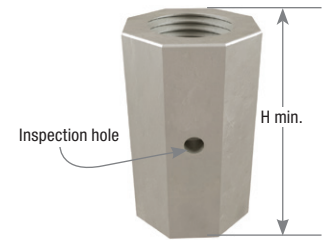
The MiTek CNW coupler nut is designed to join threaded rods to embedded anchor rods. They are also used in the Z4 Tie Down system to attach Z-Rods together (See Z4 Product Catalog). The coupler nut has an inspection hole with an internal positive stop that allows easy verification that the ends of both rods have been fully threaded. The CNW coupler is made from low carbon ASTM A563 Grade A steel (Proof Load = 90 ksi) which makes it applicable for many common ASTM steel threaded rods of equivalent or lower strength.

Materials: ASTM A563 Grade A

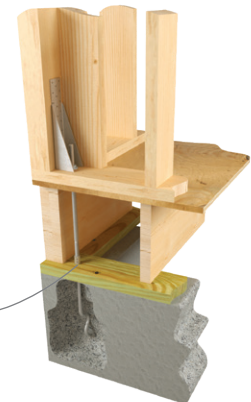
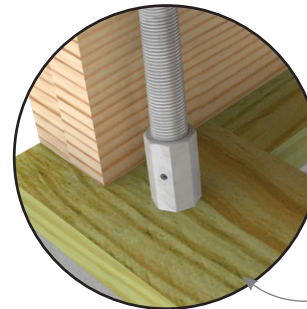
Finish: Zinc Plated

Installation:

- Inspection hole is provided to assure easy inspection.
- Tighten rods until they are visible in the inspection hole.
- Works with all thread rods of specified diameter except hot-dip galvanized.



CNW



Typical CNW installation

MiTek USP Stock No.	Ref. No.	Dimensions (in)		Allowable Tension (Lbs.) 100%	Code Ref.
		Rod Diameter	H Min		
CNW38-ZP	CNW3/8	0.375	1-1/8	2400	--
CNW12-ZP	CNW1/2	0.500	1-1/4	4265	
CNW58-ZP	CNW5/8	0.625	2-1/8	6675	
CNW34-ZP	CNW3/4	0.750	2-1/4	9610	
CNW78-ZP	CNW7/8	0.875	2-1/2	13080	
CNW1-ZP	CNW1	1.000	2-3/4	17080	
CNW118-ZP	--	1.125	3	21620	

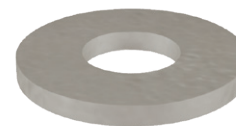
New products or updated product information are designated in **blue font**.

RW Round Washers

Washers are an important component of a threaded rod assembly and should be properly sized for the intended application. They distribute load from the tightened nut and reduce bearing stresses to prevent crushing of the supporting material. This is especially important when tightening over wood.

Materials: ASTM/ANSI B18.22

Finish: None or Zinc Plated (See Chart)



RW

Finish	MiTek USP Stock No.	Ref. No.	Dia. (in)	Code Ref.
None	RW38	--	0.375	--
	RW12	--	0.500	
	RW58	--	0.625	
	RW34	--	0.750	
	RW78	--	0.875	
	RW1	--	1.000	
	RW118	--	1.125	
Zinc Plated	RW38-ZP	--	0.375	
	RW12-ZP	WASHER1/2-ZP	0.500	
	RW58-ZP	WASHER5/8-ZP	0.625	
	RW34-ZP	WASHER3/4-ZP	0.750	
	RW78-ZP	WASHER7/8-ZP	0.875	
	RW1-ZP	WASHER1-ZP	1.000	
	RW118-ZP	WASHER1-1/8-ZP	1.125	