
MiTek[®] SUPPLEMENTAL MANUAL

Ranger Lumber Retrieval System

OPERATION MANUAL FOR BLADE™ LINEAR SAWS

Effectivity	All
Revision Date	--
Revised By	--
Orig. Release Date	01-05-2026
Created By	A. McIntire
Approved By	



Approved for Customer Use
Copyright 2026 MiTek[®].
All rights reserved.

Contents

Purpose and Scope.....	2
Procedure.....	2
Revision Table.....	7

Purpose and Scope

The Ranger is an optional infeed component for the BLADE II and BLADE (Gen 1) linear saws. This supplemental manual covers operating instructions that are unique to the Ranger that are not addressed in the BLADE II and BLADE (Gen 1) manuals. It is not an exhaustive list of all procedures and will be updated overtime to cover more processes.

	 WARNING
	<p>These instructions are not intended to replace the Ranger manufacturer manual. Read the manufacturer manual completely before using or maintaining the equipment. Do not operate this machine unless you have a thorough knowledge of the controls, safety devices, emergency stops, and operating procedures outlined in the manufacturer manual.</p>

Ranger Configurations

The ranger configurations can be divided into two categories:

- The legacy **CL (Centerline) Deck** types include the **Woodrunner, RangerEX, and RangerEX V2**
- The latest **Universal Deck** type includes **Ranger Universal**

Procedures for Ranger Ex Deck Setups

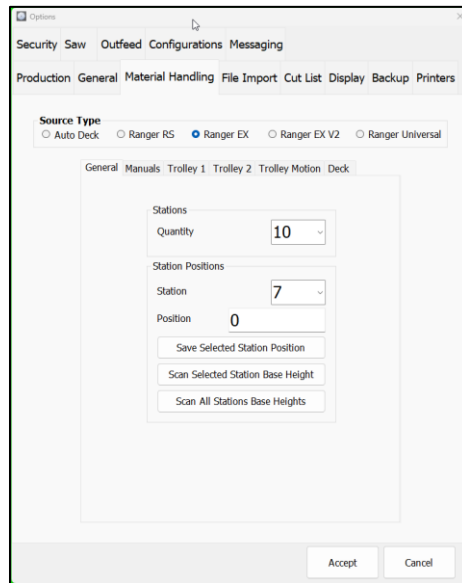
Setup or Edit Lumber Stations

The following procedure is used to set up new or edit existing lumber stations.

1. Login as Adminx via **File > Login**.
2. Navigate to **Tools > Options > Material Handling**.

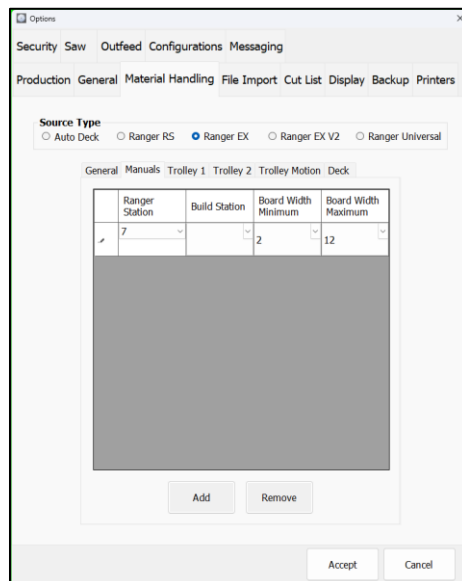
3. If not already selected, choose the hardware type that matches your system (Ranger Ex or Ranger EX V2 for this procedure).

Figure 1 – Material Handling > General



4. Under the **General** tab, set the quantity of stations to the desired amount.
 - If you are modifying the existing number of stations, you must modify the station quantity, select **Accept**, and then reopen the **Options** menu for the **Station Positions / Station** field to update.
5. Under the **Manuals** tab, set Ranger Station to the number assigned to the manual station.

Figure 2 - Material Handling > Manuals



- Place a 2x4 board on a single or multiple standard lumber carts as shown in Figure 3. For manual carts, follow the same instructions, but place wooden strips along the posts to make it easier to balance the board.

Figure 3 – Standard Station Setup Using A 2x4

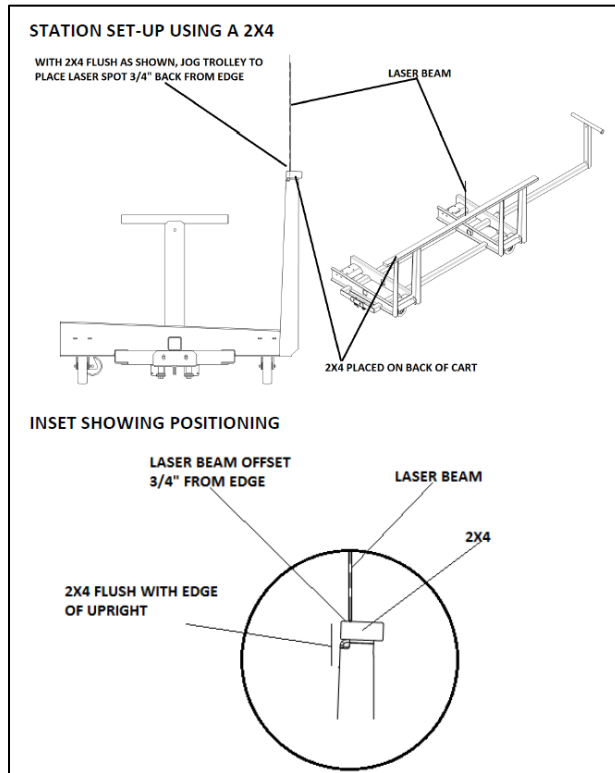
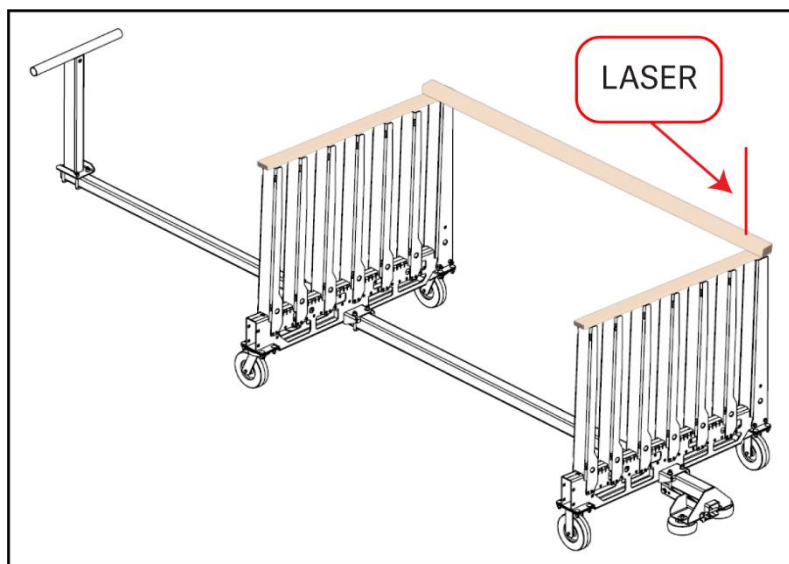
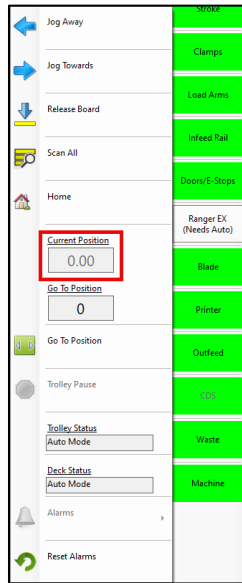


Figure 4 - Manual Station Setup Using A 2x4



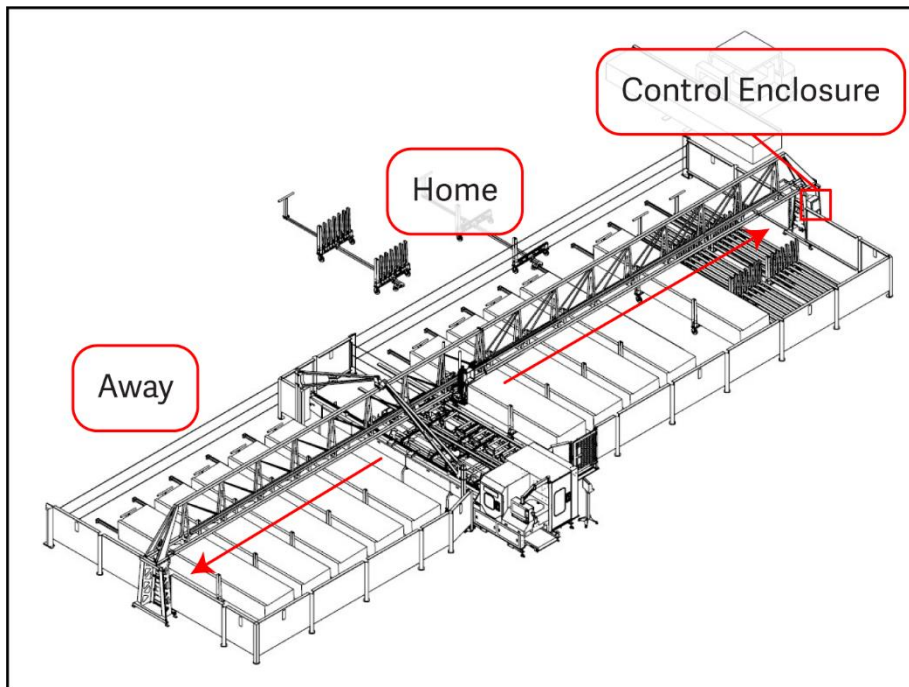
7. Jog the trolley head laser to the board on a specific station (positioned as shown in Figure 3) and record the value show. See Figure 5 for the jogging controls and current position field.

Figure 5 – Jogging Controls and Current Position

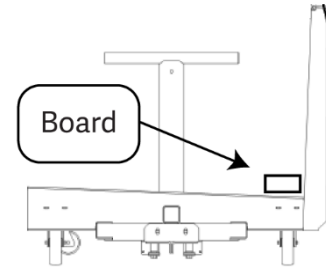
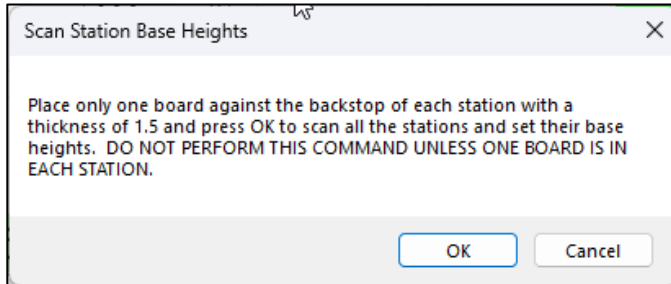


- Some Ranger configurations include lumber carts on both sides of the Infeed Rail (referred to as a T setup). In a T configuration, there is a laser on each side of the trolley head. When determining positioning, the away laser (opposite the control enclosure) should be used for both home carts and away carts. Home is always on the same side as the control enclosure.

Figure 6 – Away and Home Directions



8. Under the **General** tab, with the matching station selected, enter the position determined in the previous step. You must select **Save Selected Station Position** to save the position data.
9. If setting up multiple stations, repeat steps 0 and 8 as many times as needed.
10. Once all stations have been set up or edited, select **Scan All Stations Base Heights**. Follow the onscreen instructions. See the screenshot and graphic below for more detail.



Revision Table

Rev. Date	Description of Revision	Author(s)	Approved By
01-05-2026	New Document	A. McIntire	