

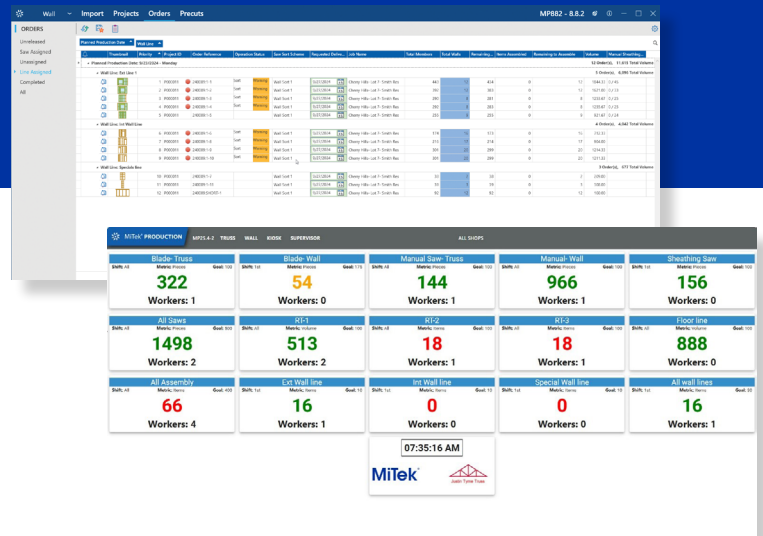
SOFTWARE

# Real-Time Production & Delivery Tracking in a Single Platform

UPGRADE NOW

MiTek<sup>®</sup>  
PRODUCTION

Boost your truss and wall production with the most integrated and streamlined production system for accurately managing component production throughout your plant.



## BENEFITS

- Streamline your workflows through automation of repetitive tasks, personnel notifications, and smooth transitions between production phases.
- Enhance operations with real-time plant and team monitoring, performance tracking, and goal setting.
- Move to a paper-free environment by storing job records digitally, significantly reducing the need for physical storage.
- Simplify prioritization by managing start dates, selecting appropriate lines of equipment, and determining product ship dates.



**BUILD SPECS ARE  
VISIBLE DURING ASSEMBLY**

MiTek<sup>®</sup>

# MiTek® PRODUCTION

Upgrade from MiTek® ShopNet or MiTek® Virtual Plant (MVP) to MiTek® Production for even more benefits.



- Integrate your workflows seamlessly with the complete MiTek Software Suite, including MiTek® Structure and MiTek® Management™.
- A browser-based solution that supports unlimited users, ensuring one upgrade applies to all workstations.
- Utilize a variety of standard reports or work with the MiTek team to create your own.
- Manage roofs, floors, and walls all within the same software application.
- Dimensions are available on-demand, so you can confirm truss or wall panel specs at any point during the assembly process.
- A consistent and customizable user interface across all workstations, simplifying training and operation for team members.
- Includes quarterly product enhancements and consistent version updates to keep your software and facility on the cutting-edge.

The conversion process typically takes around two weeks to complete for MiTek ShopNet or MiTek MVP users.

## Pre-Launch

### SOFTWARE DEMONSTRATION

- Receive a virtual demonstration of MiTek Production to preview its software capabilities
- Review next steps and expectations for the upgrade process

### INTAKE FORM

- Fill out the intake form to describe your current processes and equipment
- Engage in a detailed discussion with the MiTek implementation team so they fully understand your workflows and the requirements of your upgrade

### GAP ANALYSIS

- MiTek team evaluates your current software to ensure it's fully equipped for seamless deployment

## Launch

### REMOTE DEPLOYMENT

- MiTek Production software is installed remotely on your system by the MiTek implementation team

### ON-SITE TRAINING

- MiTek works with you to finalize the installation settings, ensuring any additional setup tasks are completed as necessary
- MiTek provides training for your employees

**Contact your MiTek Representative to get started.**



**MII.COM/PRODUCTION-UPGRADE**