

# CONCEALED POST BASES

## CPBQ series

CPBQ post anchors discreetly secure wood posts to concrete footings allowing the beauty of the wood to shine through in a true architectural design.

The innovative mesh design simplifies installation by allowing screws to be installed in a larger target area. Precise drilling for pins and bolts is not needed, making installation much easier.

These post anchors provide protection against moisture damage by featuring a powder-coated 1-inch stand-off plate that elevates untreated wood posts above concrete surfaces, as mandated by building codes.

The CPBQ post anchors are available in models that accommodate nominal and rough-cut lumber posts in sizes 4x4, 6x6, and 8x8.

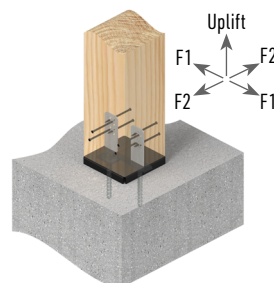
**Materials:** 12 gauge

**Finish:** G-185 galvanizing

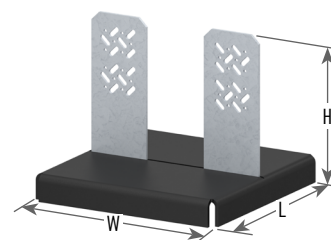
**Codes:** ESR-5695 (IBC & IRC, LABC & LARC),  
FL47554 (FBC w/HVHZ)

**Installation:** (Page 2)

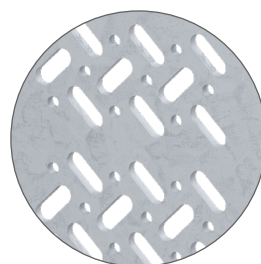
*Not recommended for fence posts or other unrestrained (not fixed or fastened at top) applications. These anchors are not designed to resist overturning (moment) loads.*



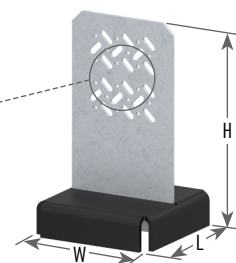
**Typical CPBQ88-TZ installation**



**CPBQ88-TZ**  
(CPBQ66-TZ similar)



**Innovative Mesh Design**



**CPBQ44-TZ**

Post Size	MiTek Stock No.	Ref. No.	Steel Gauge	Dimensions (in)			Fastener Schedule				DF/SP Allowable Loads (Lbs.)				S-P-F Allowable Loads (Lbs.)				Ctn Qty	
				W	H	L	Min/Max	Anchor Bolt		Wood Screws <sup>2</sup>	Download 100%	Uplift 160% <sup>1</sup>	F1 160%	F2 160%	Download 100%	Uplift 160% <sup>1</sup>	F1 160%	F2 160%		
								Qty	Type											Qty
4 x 4	CPBQ44-TZ	CPT44Z	12	3-1/2	6-1/8	3-1/2	Min Max	2	1/2	4 8	CCWS3	11535	1925 3035	1050 710	590	9690	1620 2550	880 595	495	10
6 x 6	CPBQ66-TZ	CPT66Z	12	5-1/2	6-1/8	5-1/2	--	2	1/2	8	CCWS45	21950	4130	1965	1540	18440	3470	1655	1295	8
8 x 8	CPBQ88-TZ	CPT88Z	12	7-1/4	6-1/8	7-1/4	--	2	1/2	8	CCWS45	24405	3935	2155	1285	20500	3305	1810	1080	6

1) Uplift loads have been increased 60% for wind and seismic loads, no further increase shall be permitted.

2) MiTek's CCWS structural wood screws are supplied with each connector; CCWS3 screws are 1/4" dia. x 3" long and CCWS45 screws are 1/4" dia. x 4-1/2" long.

3) Designer must specify anchor bolt type, length, and embedment.

4) Allowable loads shown do not apply to the anchorage to concrete or masonry.

5) **Not recommended for fence posts or other unrestrained (not fixed or fastened at top) applications. These anchors are not designed to resist overturning (moment) loads.**

**Phone: 1-800-328-5934 | Fax: 1-952-898-8605 | Email: customerservice@mii.com | MiTek-US.com**

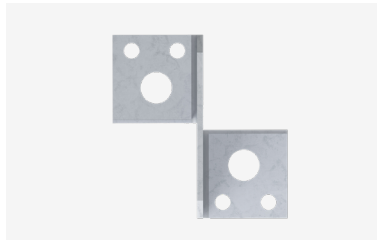
Information published in this document is valid until "two years from publishing date". Information changes and is updated periodically so please check with MiTek if viewing after this date. For the most current information please visit MiTek-US.com. For further assistance please reach out to our Engineering team at (800) 328-5934.

©2025 MiTek Inc. All Rights Reserved. #2730 12/04/2025

# CONCEALED POST BASES

CPBQ series

## Installation:



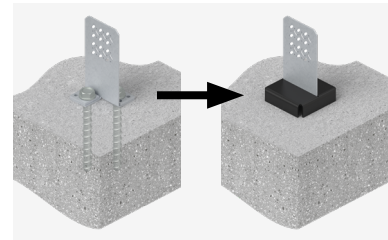
### 1. MARK BASE MATERIAL

→ Mark the location of the two large holes for either mechanical or chemical anchoring, or use the four smaller holes for concrete screws.



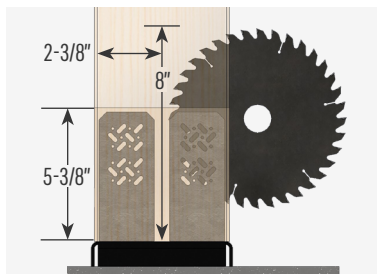
### 2. INSTALL ANCHORS

→ Washers should be used for all concrete anchors.  
→ Anchors to be designed by others and installed per manufacturers specifications.  
***Loads may be limited by the manufacturer's anchorage.***



### 3. ASSEMBLE STAND-OFF PLATE

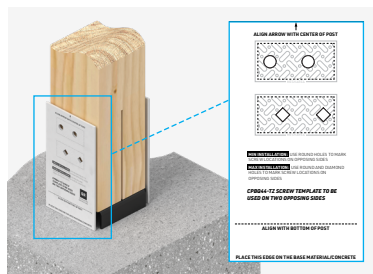
→ Slide stand-off plate over the knife plate and let it rest on the concrete.



### 4. CUT AND INSTALL POST

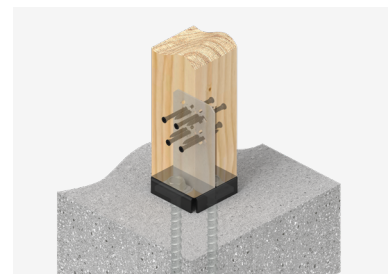
→ 1/8" wide cut  
→ 5-3/8" from the end of the post  
→ 8" from the bottom of a post for a 7-1/4" circular saw  
→ 2-3/8" deep on the 6x6 and 8x8 models, through fully for CPBQ44-TZ.

**Image shows CPBQ66-TZ (CPBQ88-TZ Similar)**



### 5. USE TEMPLATE

→ Align template with the center of the post and rest on the main member.  
→ Mark screw locations onto post.



### 6. INSTALL SCREWS

→ Predrilling recommended with 5/32" bit, up to but not through knife plate.  
→ Drive CCWS screws with a T25\* bit from each side.  
→ The mesh design in the knife plate will grab the screw, locking the post into place and resisting uplift and lateral loads.

\*T25 is a trademark of Acument