



FWH Fire Wall Hanger Installed Over APA Rated Sheathing

MiTek FWH Fire Wall Hanger may be installed over sheathing to support floor or roof framing members for shear walls that are sheathed with 1/2-inch, or thinner, APA Rated Sheathing or OSB. The allowable loads for this type of application are dependent upon how many optional face nails have been installed.

The images below illustrate the proper installation of the FWH hanger with and without the optional face nails. Refer to the Allowable Load Table below for values based on installation type.

Patents: U.S. Patent No. 10,316,510,
U.S. Patent No. 11,021,867 B2,
U.S. Patent No. 11,649,626 B2

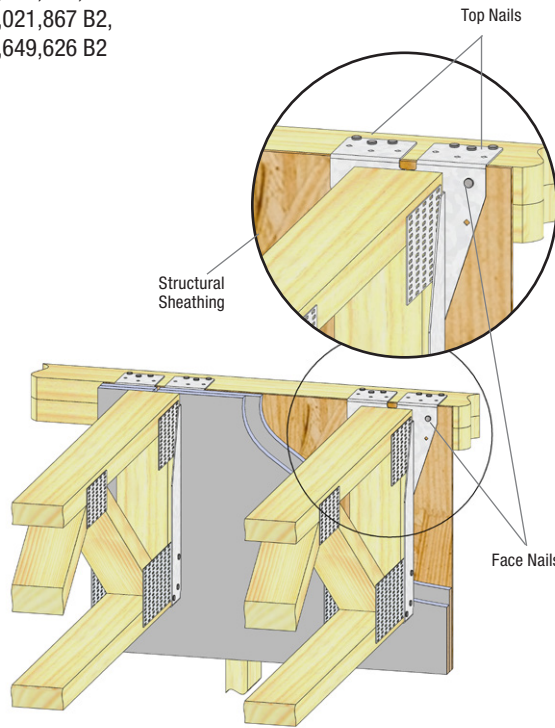
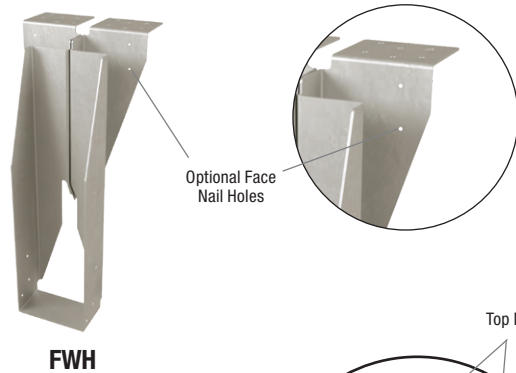


Figure 1
**Sheathing without
Optional Face Nails**

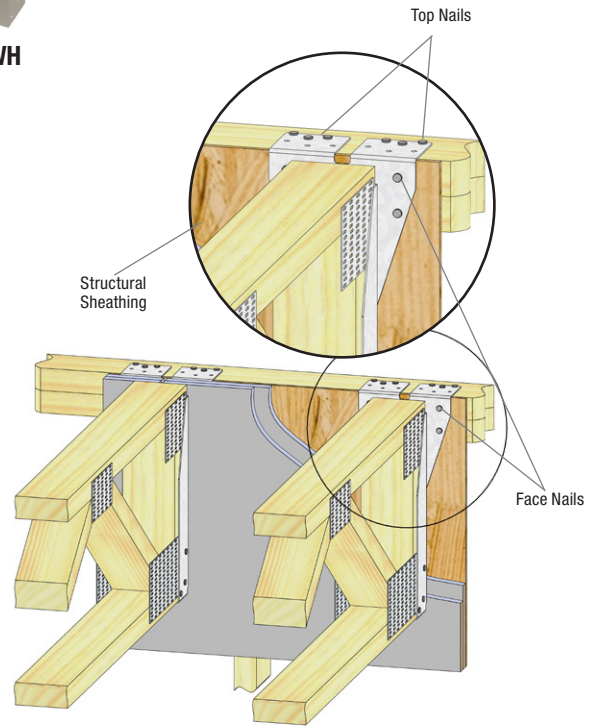


Figure 2
**Sheathing with
Optional Face Nails**

Allowable Load Table

MiTek Series	Installation Type	Fastener Schedule ⁴					DF/SP Allowable Loads (Lbs.) ^{2,3}	
		Header		Joist			Download 100%	Uplift ¹ 160%
		Top Qty	Face Qty	Type	Qty	Type		
FWH	Figure 1	6	2	10d	2	10d x 1-1/2	1600	380
	Figure 2	6	4	10d	2	10d x 1-1/2	2400	380

- 1) Uplift loads have been increased 60% for wind or seismic loads; no further increase shall be permitted.
- 2) Listed loads shall not be increased.
- 3) **Values in the table apply to standard top mount hangers without slope, skew or any other specialty options.**
- 4) **NAILS:** 10d x 1-1/2 nails are 0.148" dia. x 1-1/2" long, 10d nails are 0.148" dia. x 3" long,

Information published in this document is valid until October 2023. Visit MiTek-US.com for the most current version or contact MiTek Engineering at 800-328-5934.

Customer Service & Technical Assistance

Phone: 1-800-328-5934 • Fax: 1-952-898-8605 • Email: customerservice@mii.com