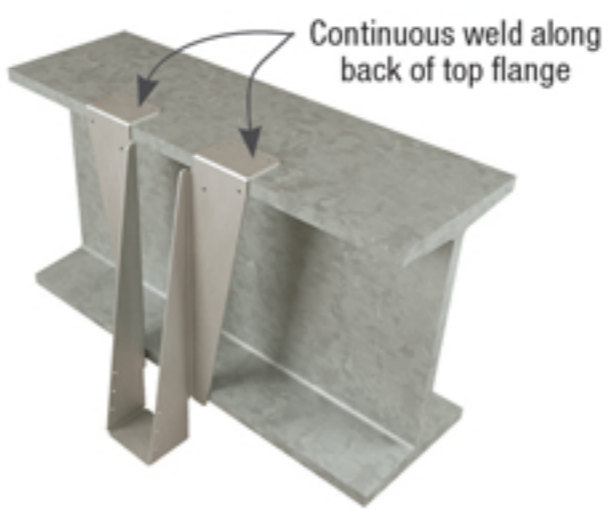
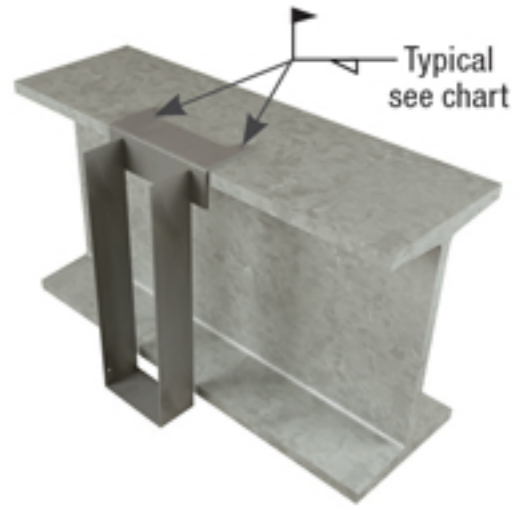


- Weld sizes and lengths shown on chart.
- Weld-on applications produce maximum allowable load listed. **Uplift loads do not apply to this application.**
- All welding should be done in accordance with the American Welding Society (AWS) Standard by a certified welder.
Caution: Welding galvanized steel may produce harmful fumes and should only be performed in well-ventilated environments.



Typical top flange welded installation



Typical top angle welded installation

Top Angle Weld Length Chart

MiTek Welded Hanger Series	Weld Length
SW	3"
BPH, FWH, HBPH, PHM, SWH	4"
FWHBP, FWHFM, FWHH, KLB, KHW, PHXU	6"
KB, KGB, KHGB, KHGB, KGLS, KGLST, KGLT, KHGLS, KHGLST	8"
HLBH, KHGLT	10"

Top Angle Steel Gauge	Weld Size
14 - 10 gauge	1/8"
7 gauge	3/16"
3 gauge	1/4"

Weld shall be distributed evenly.