

MiTek®

HOMEBUILDING SOLUTIONS

CONNECTOR PRODUCTS



BETTER TECHNOLOGY.
BETTER BUILDING.

- Connector Plates
- Truss Bracing
- Restraining Products



MT20 - 20 GAUGE

BOX

| Item Number | Plate Size | Ship Weight | Pcs/ Unit | Units/ Pallet | Item Number | Plate Size | Ship Weight | Pcs/ Unit | Units/ Pallet |
|-------------|------------|-------------|-----------|---------------|-------------|------------|-------------|-----------|---------------|
| 20-010030 | 1 x 3 | 69.2 | 2004 | 30 | 20-060060 | 6 x 6 | 54.7 | 132 | 30 |
| 20-010040 | 1 x 4 | 66.8 | 1452 | 30 | 20-060080 | 6 x 8 | 55.2 | 100 | 36 |
| 20-015030 | 1.5 x 3 | 67.1 | 1296 | 30 | 20-060100 | 6 x 10 | 66.3 | 96 | 36 |
| 20-015040 | 1.5 x 4 | 64.6 | 936 | 30 | 20-060120 | 6 x 12 | 62.9 | 76 | 36 |
| 20-020030 | 2 x 3 | 67.9 | 984 | 30 | 20-060140 | 6 x 14 | 69.6 | 72 | 36 |
| 20-020040 | 2 x 4 | 60.2 | 654 | 30 | 20-060160 | 6 x 16 | 53.0 | 48 | 36 |
| 20-020050 | 2 x 5 | 61.4 | 534 | 30 | 20-060180 | 6 x 18 | 59.6 | 48 | 36 |
| 20-020060 | 2 x 6 | 55.5 | 402 | 30 | 20-060440 | 6 x 44 | 36.4 | 12 | 36 |
| 20-020080 | 2 x 8 | 55.2 | 300 | 30 | 20-070080 | 7 x 8 | 54.1 | 84 | 36 |
| 20-025040 | 2.5 x 4 | 59.8 | 520 | 30 | 20-070100 | 7 x 10 | 64.4 | 80 | 36 |
| 20-025050 | 2.5 x 5 | 59.2 | 412 | 30 | 20-070120 | 7 x 12 | 58.0 | 60 | 36 |
| 20-025060 | 2.5 x 6 | 55.2 | 320 | 30 | 20-070140 | 7 x 14 | 51.8 | 46 | 36 |
| 20-030030 | 3 x 3 | 62.1 | 600 | 30 | 20-070160 | 7 x 16 | 54.1 | 42 | 36 |
| 20-030040 | 3 x 4 | 58.0 | 420 | 30 | 20-070180 | 7 x 18 | 60.9 | 42 | 36 |
| 20-030050 | 3 x 5 | 57.3 | 332 | 30 | 20-070440 | 7 x 44 | 42.5 | 12 | 36 |
| 20-030060 | 3 x 6 | 53.8 | 260 | 30 | 20-080080 | 8 x 8 | 61.8 | 84 | 36 |
| 20-030080 | 3 x 8 | 53.0 | 192 | 30 | 20-080090 | 8 x 9 | 70.0 | 84 | 36 |
| 20-030100 | 3 x 10 | 48.3 | 140 | 30 | 20-080100 | 8 x 10 | 69.9 | 76 | 36 |
| 20-030120 | 3 x 12 | 49.7 | 120 | 30 | 20-080120 | 8 x 12 | 70.7 | 64 | 36 |
| 20-040040 | 4 x 4 | 60.7 | 330 | 30 | 20-080140 | 8 x 14 | 59.3 | 46 | 36 |
| 20-040050 | 4 x 5 | 60.0 | 261 | 30 | 20-080160 | 8 x 16 | 61.8 | 42 | 36 |
| 20-040060 | 4 x 6 | 58.0 | 210 | 30 | 20-080180 | 8 x 18 | 69.6 | 42 | 36 |
| 20-040080 | 4 x 8 | 55.2 | 150 | 30 | 20-080200 | 8 x 20 | 69.9 | 38 | 36 |
| 20-040100 | 4 x 10 | 55.2 | 120 | 30 | 20-080440 | 8 x 44 | 48.6 | 12 | 36 |
| 20-040120 | 4 x 12 | 56.3 | 102 | 30 | 20-100100 | 10 x 10 | 55.2 | 48 | 36 |
| 20-040140 | 4 x 14 | 69.6 | 108 | 36 | 20-100120 | 10 x 12 | 66.3 | 48 | 36 |
| 20-040160 | 4 x 16 | 57.4 | 78 | 36 | 20-100140 | 10 x 14 | 70.9 | 44 | 36 |
| 20-040440 | 4 x 44 | 24.3 | 12 | 36 | 20-100160 | 10 x 16 | 58.9 | 32 | 36 |
| 20-050050 | 5 x 5 | 57.5 | 200 | 30 | 20-100180 | 10 x 18 | 66.3 | 32 | 36 |
| 20-050060 | 5 x 6 | 55.2 | 160 | 30 | 20-100200 | 10 x 20 | 69.0 | 30 | 36 |
| 20-050080 | 5 x 8 | 50.6 | 110 | 30 | 20-100440 | 10 x 44 | 60.7 | 12 | 36 |
| 20-050100 | 5 x 10 | 57.5 | 100 | 36 | 20-120120 | 12 x 12 | 53.0 | 32 | 36 |
| 20-050120 | 5 x 12 | 66.3 | 96 | 36 | 20-120140 | 12 x 14 | 61.8 | 32 | 36 |
| 20-050140 | 5 x 14 | 70.9 | 88 | 36 | 20-120160 | 12 x 16 | 53.0 | 24 | 36 |
| 20-050160 | 5 x 16 | 55.2 | 60 | 36 | 20-120180 | 12 x 18 | 59.6 | 24 | 36 |
| 20-050440 | 5 x 44 | 30.4 | 12 | 36 | 20-120200 | 12 x 20 | 66.3 | 24 | 36 |
| | | | | | 20-120440 | 12 x 44 | 72.9 | 12 | 36 |



MT20 - 20 GAUGE

BULK - BOX

| Item Number (K) | Plate Size | Ship Weight | Pcs/Unit (Pallet) | Item Number (K) | Plate Size | Ship Weight | Pcs/Unit (Pallet) |
|-----------------|------------|-------------|-------------------|-----------------|------------|-------------|-------------------|
| 122-010020 | 1 x 2 | 1,840.3 | 80,000 | 122-020030 | 2 x 3 | 1,449.3 | 21,000 |
| 122-010030 | 1 x 3 | 1,418.2 | 41,100 | 122-020040 | 2 x 4 | 1,297.4 | 14,100 |
| 122-015030 | 1.5 x 3 | 1,604.5 | 31,000 | 122-020050 | 2 x 5 | 1,265.2 | 11,000 |
| 122-015040 | 1.5 x 4 | 1,518.3 | 22,000 | 122-025050 | 2.5 x 5 | 1,294.0 | 9,000 |
| | | | | 122-030030 | 3 x 3 | 1,428.5 | 13,800 |



MT20 - 20 GAUGE

BANDED - PALLET

| Item Number | Plate Size | Packs/ Layer | No. of Layers | Ship Weight | Pcs/Unit (Pallet) | Item Number | Plate Size | Packs/ Layer | No. of Layers | Ship Weight | Pcs/Unit (Pallet) |
|-------------|------------|--------------|---------------|-------------|-------------------|-------------|------------|--------------|---------------|-------------|-------------------|
| 22-030040 | 3 x 4 | 110 | 10 | 3,036.5 | 22000 | 22-050050 | 5 x 5 | 90 | 6 | 3,105.5 | 10800 |
| 22-030050 | 3 x 5 | 90 | 10 | 3,105.5 | 18000 | 22-050060 | 5 x 6 | 70 | 6 | 2,898.5 | 8400 |
| 22-030060 | 3 x 6 | 70 | 10 | 2,898.5 | 14000 | 22-050080 | 5 x 8 | 50 | 6 | 2,760.5 | 6000 |
| 22-030080 | 3 x 8 | 50 | 10 | 2,760.5 | 10000 | 22-050100 | 5 x 10 | 40 | 6 | 2,760.5 | 4800 |
| 22-030100 | 3 x 10 | 40 | 10 | 2,760.5 | 8000 | 22-050120 | 5 x 12 | 30 | 6 | 2,484.4 | 3600 |
| 22-030120 | 3 x 12 | 30 | 10 | 2,484.4 | 6000 | | | | | | |
| 22-040040 | 4 x 4 | 110 | 7 | 2,834.1 | 15400 | 22-060060 | 6 x 6 | 70 | 5 | 2,898.5 | 7000 |
| 22-040050 | 4 x 5 | 90 | 7 | 2,898.5 | 12600 | 22-060080 | 6 x 8 | 50 | 5 | 2,760.5 | 5000 |
| 22-040060 | 4 x 6 | 70 | 7 | 2,705.3 | 9800 | 22-060100 | 6 x 10 | 40 | 5 | 2,760.5 | 4000 |
| 22-040080 | 4 x 8 | 50 | 7 | 2,576.5 | 7000 | 22-060120 | 6 x 12 | 30 | 5 | 2,484.4 | 3000 |
| 22-040100 | 4 x 10 | 40 | 7 | 2,576.5 | 5600 | | | | | | |
| 22-040120 | 4 x 12 | 30 | 7 | 2,318.8 | 4200 | | | | | | |



MT18HS - HIGH STRENGTH 18 GAUGE

BOX

| Item Number | Plate Size | Ship Weight | Pcs/ Unit | Units/ Pallet | Item Number | Plate Size | Ship Weight | Pcs/ Unit | Units/ Pallet |
|-------------|------------|-------------|-----------|---------------|-------------|------------|-------------|-----------|---------------|
| 17-030080 | 3 x 8 | 48.9 | 136 | 30 | 17-100180 | 10 x 18 | 59.3 | 22 | 36 |
| 17-030100 | 3 x 10 | 57.5 | 128 | 30 | 17-100200 | 10 x 20 | 65.9 | 22 | 36 |
| 17-030120 | 3 x 12 | 64.7 | 120 | 30 | 17-100440 | 10 x 44 | 79.1 | 12 | 36 |
| 17-030160 | 3 x 16 | 57.5 | 80 | 36 | 17-120160 | 12 x 16 | 57.5 | 20 | 36 |
| 17-030440 | 3 x 44 | 39.5 | 20 | 36 | 17-120200 | 12 x 20 | 64.7 | 18 | 36 |
| | | | | | 17-120440 | 12 x 44 | 94.9 | 12 | 36 |

MT20HS - HIGH STRENGTH 20 GAUGE

BOX

| Item Number | Plate Size | Ship Weight | Pcs/ Unit | Units/ Pallet |
|-------------|------------|-------------|-----------|---------------|
| 29-030080 | 3 x 8 | 53.0 | 192 | 30 |
| 29-030100 | 3 x 10 | 48.3 | 140 | 30 |
| 29-030120 | 3 x 12 | 49.7 | 120 | 30 |
| 29-040120 | 4 x 12 | 56.3 | 102 | 30 |
| 29-060120 | 6 x 12 | 62.9 | 76 | 36 |
| 29-060140 | 6 x 14 | 69.6 | 72 | 36 |
| 29-060160 | 6 x 16 | 53.0 | 48 | 36 |
| 29-060440 | 6 x 44 | 36.4 | 12 | 36 |
| 29-070100 | 7 x 10 | 64.4 | 80 | 36 |
| 29-070120 | 7 x 12 | 58.0 | 60 | 36 |
| 29-070140 | 7 x 14 | 51.8 | 46 | 36 |
| 29-070440 | 7 x 44 | 42.5 | 12 | 36 |
| 29-080120 | 8 x 12 | 70.7 | 64 | 36 |
| 29-080140 | 8 x 14 | 59.3 | 46 | 36 |
| 29-080440 | 8 x 44 | 48.6 | 12 | 36 |
| 29-100120 | 10 x 12 | 66.3 | 48 | 36 |
| 29-100140 | 10 x 14 | 70.9 | 44 | 36 |
| 29-100440 | 10 x 44 | 60.7 | 12 | 36 |
| 29-120120 | 12 x 12 | 53.0 | 32 | 36 |
| 29-120140 | 12 x 14 | 61.8 | 32 | 36 |
| 29-120160 | 12 x 16 | 53.0 | 24 | 36 |
| 29-120200 | 12 x 20 | 66.0 | 24 | 36 |
| 29-120440 | 12 x 44 | 72.9 | 12 | 36 |

MT18AHS - ADVANCED HIGH STRENGTH 18 GAUGE



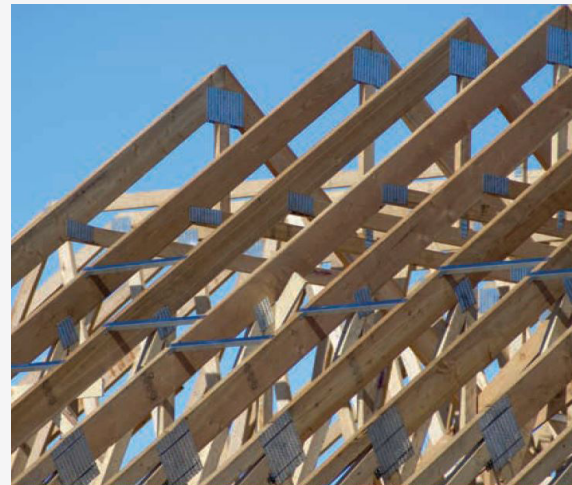
BOX

| Item Number | Plate Size | Ship Weight | Pcs/ Unit | Units/ Pallet |
|----------------|------------|-------------|-----------|---------------|
| 88-030060 | 3 x 6 | 64.7 | 240 | 30 |
| 88-030080 | 3 x 8 | 48.9 | 136 | 30 |
| 88-030100 | 3 x 10 | 57.5 | 128 | 30 |
| 88-030120 | 3 x 12 | 64.7 | 120 | 30 |
| 88-030140 | 3 x 14 | 62.9 | 100 | 36 |
| 88-030160 | 3 x 16 | 57.5 | 80 | 36 |
| 88-030180 | 3 x 18 | 61.5 | 76 | 36 |
| 88-030440 | 3 x 44 | 39.5 | 20 | 36 |
| | | | | |
| 88-040080 | 4 x 8 | 48.9 | 102 | 30 |
| 88-040100 | 4 x 10 | 65.9 | 110 | 30 |
| 88-040120 | 4 x 12 | 71.9 | 100 | 30 |
| 88-040140 | 4 x 14 | 72.1 | 86 | 36 |
| 88-040160 | 4 x 16 | 63.3 | 66 | 36 |
| 88-040440 | 4 x 44 | 42.2 | 16 | 36 |
| | | | | |
| 88-050080 | 5 x 8 | 65.9 | 110 | 36 |
| 88-050100 | 5 x 10 | 71.9 | 96 | 36 |
| 88-050120 | 5 x 12 | 71.9 | 80 | 36 |
| 88-050140 | 5 x 14 | 75.5 | 72 | 36 |
| 88-050160 | 5 x 16 | 64.7 | 54 | 36 |
| 88-050180 | 5 x 18 | 64.7 | 48 | 36 |
| 88-050440 | 5 x 44 | 39.5 | 12 | 36 |
| | | | | |
| 88-060080 | 6 x 8 | 63.3 | 88 | 36 |
| 88-060100 | 6 x 10 | 68.3 | 76 | 36 |
| 88-060120 | 6 x 12 | 64.7 | 60 | 36 |
| 88-060140 | 6 x 14 | 55.3 | 44 | 36 |
| 88-060160 | 6 x 16 | 69.0 | 48 | 36 |
| 88-060180 | 6 x 18 | 74.4 | 46 | 36 |
| See 88-060440* | 6 x 24 | NA | NA | NA |
| 88-060440 | 6 x 44 | 47.4 | 12 | 36 |
| | | | | |
| 88-070080 | 7 x 8 | 70.4 | 84 | 36 |
| 88-070100 | 7 x 10 | 69.2 | 66 | 36 |
| 88-070120 | 7 x 12 | 60.4 | 48 | 36 |
| 88-070140 | 7 x 14 | 64.6 | 44 | 36 |
| 88-070160 | 7 x 16 | 57.0 | 34 | 36 |
| 88-070180 | 7 x 18 | 64.2 | 34 | 36 |
| See 88-070440* | 7 x 22 | NA | NA | NA |
| 88-070440 | 7 x 44 | 55.4 | 12 | 36 |

| Item Number | Plate Size | Ship Weight | Pcs/ Unit | Units/ Pallet |
|----------------|------------|-------------|-----------|---------------|
| 88-080100 | 8 x 10 | 57.5 | 48 | 36 |
| 88-080120 | 8 x 12 | 69.0 | 48 | 36 |
| 88-080140 | 8 x 14 | 67.1 | 40 | 36 |
| 88-080160 | 8 x 16 | 46.0 | 24 | 36 |
| 88-080180 | 8 x 18 | 51.8 | 24 | 36 |
| See 88-080440* | 8 x 24 | NA | NA | NA |
| 88-080440 | 8 x 44 | 63.3 | 12 | 36 |
| | | | | |
| 88-090100 | 9 x 10 | 64.7 | 48 | 36 |
| 88-090120 | 9 x 12 | 64.7 | 40 | 36 |
| 88-090140 | 9 x 14 | 64.2 | 34 | 36 |
| 88-090160 | 9 x 16 | 51.8 | 24 | 36 |
| 88-090180 | 9 x 18 | 58.2 | 24 | 36 |
| See 88-090440* | 9 x 22 | NA | NA | NA |
| 88-090440 | 9 x 44 | 71.2 | 12 | 36 |
| | | | | |
| 88-100100 | 10 x 10 | 71.9 | 48 | 36 |
| 88-100120 | 10 x 12 | 71.9 | 40 | 36 |
| 88-100140 | 10 x 14 | 67.1 | 32 | 36 |
| 88-100160 | 10 x 16 | 57.5 | 24 | 36 |
| 88-100180 | 10 x 18 | 59.3 | 22 | 36 |
| See 88-100440* | 10 x 22 | NA | NA | NA |
| 88-100440 | 10 x 44 | 79.1 | 12 | 36 |
| | | | | |
| 88-120140 | 12 x 14 | 60.4 | 24 | 36 |
| 88-120160 | 12 x 16 | 57.5 | 20 | 36 |
| 88-120180 | 12 x 18 | 64.7 | 20 | 36 |
| 88-120200 | 12 x 20 | 64.7 | 18 | 36 |
| See 88-120440* | 12 x 22 | NA | NA | NA |
| 88-120440 | 12 x 44 | 94.9 | 12 | 36 |

*44" bar stock plates can be cut down to smaller sizes

*44" bar stock plates can be cut down to smaller sizes



T PLATE - 18 GAUGE HIGH STRENGTH



BOX

| Item Number | Plate Size | Ship Weight | Pcs/ Unit | Units/ Pallet |
|-------------|------------|-------------|-----------|---------------|
| 12-060100 | 6 x 10 | 54.6 | 76 | 36 |
| 12-060120 | 6 x 12 | 48.5 | 60 | 36 |
| 12-070100 | 7 x 10 | 53.1 | 66 | 36 |
| 12-070120 | 7 x 12 | 43.1 | 48 | 36 |

TL20 PIGGYBACK PLATE



BOX

| Item Number | Plate Size | Ship Weight | Pcs/Unit (Box) | Boxes/ Skid | Units/ Pallet |
|-----------------|------------|-------------|----------------|-------------|---------------|
| 120-020080Piggy | 2 x 8 | 55.2 | 300 | 30 | 30 |
| 120-030080Piggy | 3 x 8 | 48.3 | 175 | 30 | 24 |

MT20 BEVEL PLATE



BOX

| Item Number | Plate Size/ Orientation | Ship Weight | Pcs/ Unit | Units/ Pallet |
|-------------|-------------------------|-------------|-----------|---------------|
| 12-040080RH | 4 x 8/RH | 56.3 | 204 | 36 |
| 12-040080LH | 4 x 8/LH | 56.3 | 204 | 36 |
| 12-050105RH | 5 x 10.5/RH | 52.9 | 120 | 36 |
| 12-050105LH | 5 x 10.5/LH | 52.9 | 120 | 36 |
| 12-060120RH | 6 x 12/RH | 59.6 | 96 | 36 |
| 12-060120LH | 6 x 12/LH | 59.6 | 96 | 36 |

Please order equal quantities of LH and RH

MT20 COIL NAILS

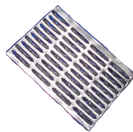
For use with MiTek®
JackRabbit® Press



PALLET

| Item Number | Plate Width/ Length | Ship Weight | Coils/ Pallet | Units/ Pallet |
|-------------|---------------------|-------------|---------------|---------------|
| 20-010COIL | 1.0" x 183' | 610.0 | 24 | 1 |
| 20-020COIL | 2.0" x 175' | 585.0 | 12 | 1 |
| 20-030COIL | 3.0" x 132' | 448.0 | 8 | 1 |

GRASSHOPPER™ TOP PLATE TIE



BOX

| Item Number | Plate Size | Ship Weight | Pcs/ Unit | Units/ Pallet |
|-------------|-------------|-------------|-----------|---------------|
| 13-2H | 3.44 x 2.5 | 50.0 | 400 | 30 |
| 13-4H | 3.44 x 5 | 50.0 | 200 | 30 |
| 13-5H | 3.44 x 6.25 | 62.0 | 200 | 30 |
| 13-6H | 3.44 x 7.5 | 66.0 | 176 | 30 |
| 13-7H | 3.44 x 8.75 | 65.0 | 150 | 30 |
| 13-8H | 3.44 x 10 | 50.0 | 100 | 30 |
| 13-10H | 3.44 x 12.5 | 62.0 | 100 | 30 |
| 13-14H | 3.44 x 17.5 | 65.0 | 75 | 30 |
| 13-16H | 3.44 x 20 | 50.0 | 50 | 30 |

SPECIALTY PLATES

Impaling Clips & Industrial

BOX

| Item Number | Plate Size/ Description | Ship Weight | Pcs/Unit (Box) | Units/ Pallet |
|-------------|-------------------------|-------------|----------------|---------------|
| 150-015080 | Seat Plate 1.5 x 8 | 20.0 | 300 | 36 |
| 18-014023 | 1.4 x 2.3 18 Ga ST Nail | 46.7 | 1008 | 36 |
| 18-014047 | 1.4 x 4.7 18 Ga ST Nail | 25.0 | 252 | 30 |
| 18-042047 | 4.2 x 4.7 18 Ga St Nail | 56.2 | 190 | 30 |

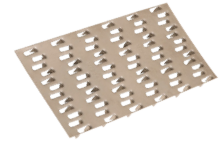
ST Nail



Seat Plate



MT20 STAINLESS STEEL



SOLD BY THE PIECE

| Item Number | Plate Size | Ship Weight | Item Number | Plate Size | Ship Weight |
|-------------|------------|-------------|-------------|------------|-------------|
| 28-020040 | 2 x 4 | 0.09 | 28-060060 | 6 x 6 | 0.41 |
| 28-020060 | 2 x 6 | 0.14 | 28-060080 | 6 x 8 | 0.55 |
| 28-030040 | 3 x 4 | 0.14 | 28-060100 | 6 x 10 | 0.69 |
| 28-030060 | 3 x 6 | 0.21 | 28-060120 | 6 x 12 | 0.83 |
| 28-030080 | 3 x 8 | 0.28 | 28-060140 | 6 x 14 | 0.97 |
| 28-030100 | 3 x 10 | 0.35 | 28-080080 | 8 x 8 | 0.74 |
| 28-040040 | 4 x 4 | 0.18 | 28-080100 | 8 x 10 | 0.92 |
| 28-040060 | 4 x 6 | 0.28 | 28-080120 | 8 x 12 | 1.10 |
| 28-040080 | 4 x 8 | 0.37 | 28-080140 | 8 x 14 | 1.29 |
| 28-040100 | 4 x 10 | 0.46 | 28-080160 | 8 x 16 | 1.47 |
| 28-040120 | 4 x 12 | 0.55 | | | |

Stainless Steel plates are manufactured to order. Because of this, orders must be firm and are non-cancellable/non-returnable. Production of the stainless plates occurs on approximately the 1st and 15th of each month using Grade 304, Type 2B Finish steel.

THE STABILIZER®



BOX

| Item Number | Metal Web Size | Ship Weight | Pcs/Unit (Box) | Units/Pallet |
|-------------|----------------|-------------|----------------|--------------|
| 31-16 | 16 inches OC | 42.0 | 70 | 32 |
| 31-24 | 24 inches OC | 45.0 | 50 | 32 |

HINGE PLATES - 18 GAUGE



BOX

| Item Number | Plate Size/Description | Ship Weight | Pcs/Unit (Box) | Units/Pallet |
|-------------|-----------------------------------------------|-------------|----------------|--------------|
| 33-023084 | 2.3 x 8.4 MTH18 Teeth on both halves | 46.5 | 160 | 30 |
| 33-023084H | 2.3 x 8.4 MTHNH18 Half teeth; Half nail-on | 46.5 | 160 | 30 |

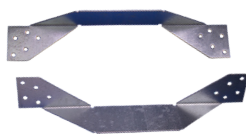
POSI-STRUT® METAL WEB



BOX

| Item Number | Metal Web Size | Ship Weight | Pcs/Unit (Box) | Units/Pallet |
|-------------|----------------------|-------------|----------------|--------------|
| 30-100240 | 9.25 x 24 UV-10 Web | 705.0 | 1120 | 2 |
| 30-120240 | 11.25 x 24 UV-12 Web | 545.0 | 700 | 2 |
| 30-140290 | 14 x 28.75 UV-14 Web | 630.0 | 650 | 2 |
| 30-160280 | 16 x 28.25 UV-16 Web | 484.0 | 440 | 2 |

STRAPS & TIE DOWNS



BOX

| Item Number | Size & Description | Ship Weight | Pcs/Unit (Box) | Units/Pallet |
|-------------|--------------------------|-------------|----------------|--------------|
| 32-013100 | 1.25 x 10.0 SW Frame | 75.0 | 400 | 30 |
| 32-013130 | 1.25 x 13.0 FL Tie Down | 73.0 | 300 | 30 |
| 32-015095 | 1.5 x 9.5 Uplift Clip | 54.0 | 250 | 30 |
| 32-015125 | 1.5 x 12.5 WIN Clip Orig | 36.0 | 250 | 30 |

20 GAUGE NAIL-ON PLATE



BOX

| Item Number | Plate Size | Ship Weight | Pcs/Unit | Units/Pallet |
|-------------|------------|-------------|-----------|--------------|
| 150-LNP1X5 | 1 x 5 | 21.3 | 370 | 130 |
| 150-LNP2X4 | 2 x 4 | 21.2 | 230 | 130 |
| 150-LNP3X4 | 3 x 4 | 19.1 | 150 | 130 |
| 150-LNP3X5 | 3 x 5 | 20.7 | 120 | 130 |
| 150-LNP3X6 | 3 x 6 | 20.7 | 100 | 130 |
| 150-LNP3X7 | 3 x 7 | 19.3 | 80 | 130 |
| 150-LNP3X8 | 3 x 8 | 19.3 | 70 | 130 |
| 150-LNP3X9 | 3 x 9 | 18.6 | 60 | 130 |
| 150-LNP3X10 | 3 x 10 | 17.3 | 50 | 130 |
| 150-LNP4X8 | 4 x 8 | 18.4 | 50 | 130 |
| 150-LNP4X15 | 4 x 15 | 20.7 | 30 | 130 |
| 150-LNP5X6 | 5 x 6 | 20.7 | 60 | 130 |
| 150-LNP6X6 | 6 x 6 | 20.7 | 50 | 130 |
| 150-LNP6X8 | 6 x 8 | 16.6 | 30 | 130 |
| 150-LNP6X10 | 6 x 10 | 20.7 | 30 | 130 |
| 150-LNP6X12 | 6 x 12 | 16.6 | 20 | 130 |
| 150-LNP6X20 | 6 x 20 | 20.7 | 15 | 130 |
| 150-LNP6X24 | 6 x 24 | 33.0 | 20/Bundle | 130 |
| 150-LNP6X48 | 6 x 48 | 33.1 | 10/Bundle | 130 |
| 150-LNP8X10 | 8 x 10 | 18.4 | 20 | 130 |

NOTE ON WEIGHT:

The weights calculated throughout this catalog are based on the following industry standards:

20 gauge

.011502#/square inch

18 gauge

.014970#/square inch

16 gauge

.018400#/square inch

Due to allowable tolerances of steel thicknesses, actual weight(s) may vary.

MII.COM/CONNECTOR-PLATES