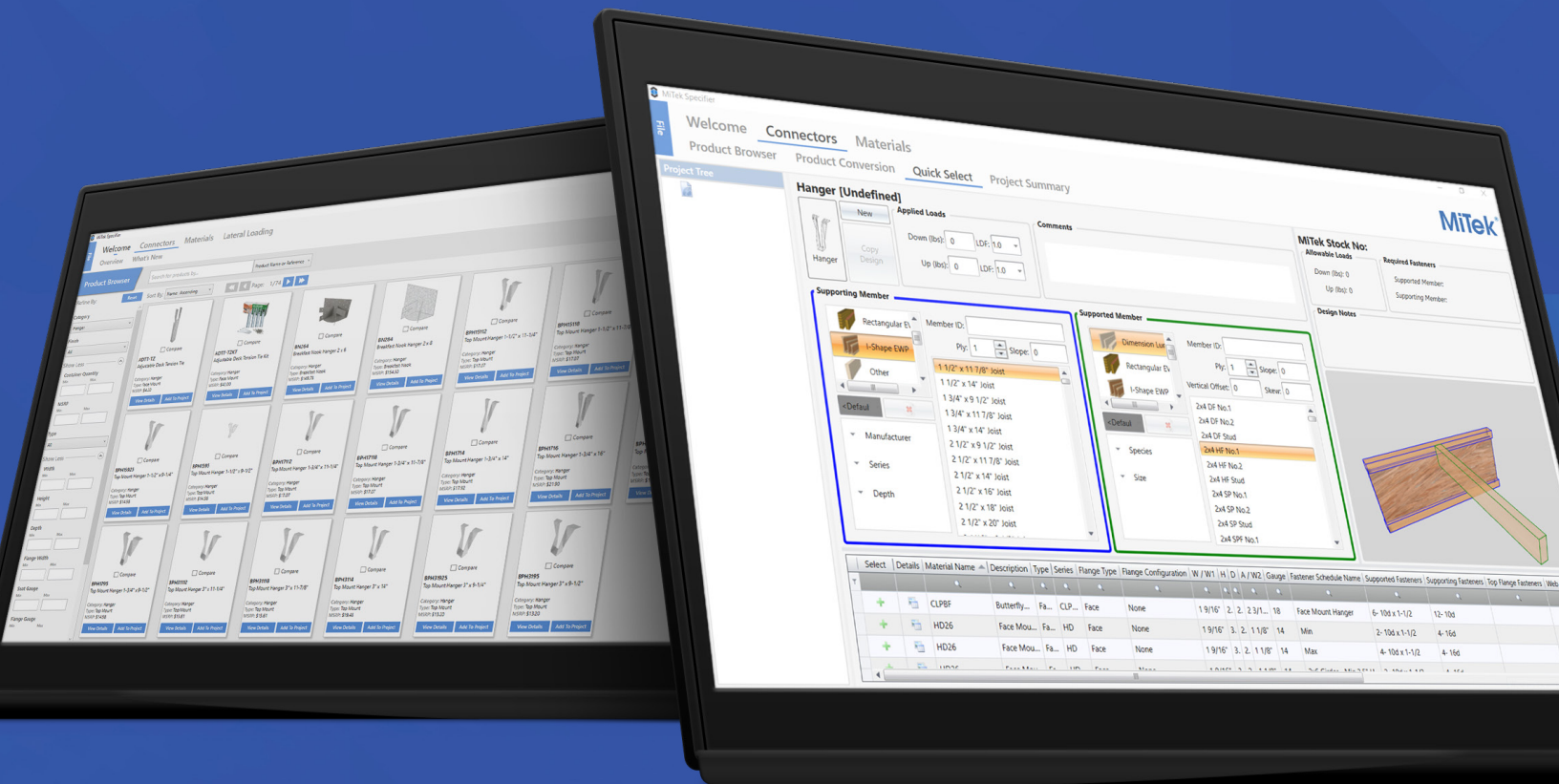


MiTek[®] SPECIFIER[™] Structural Connectors

DOWNLOAD YOUR FREE COPY OR UPGRADE CURRENT VERSION AT:
MiTek-US.com/Software/Specifier



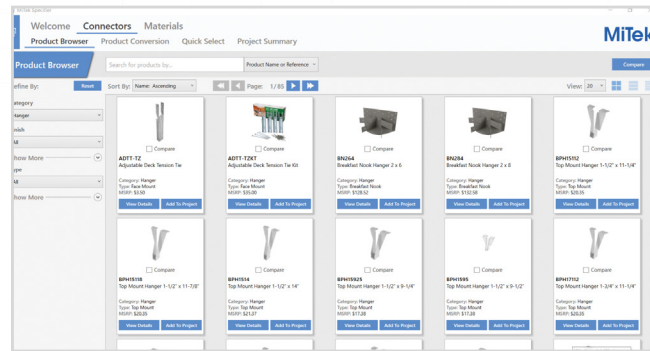
MITEK SPECIFIER[™] simplifies your access to information on over 3700 structural connectors with more than 6900 different fastening schedules to choose from

SYSTEM REQUIREMENTS

Operating Systems: Windows 8.1, Windows 10.
Specifier does not support the Mac operating system.
CPU: 64 bit processor
RAM: 2.0GB

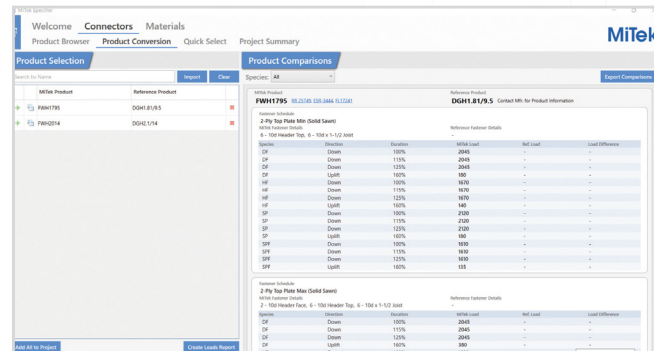
There are 3 easy ways to input information and identify structural connectors.

MITEK SPECIFIER PROVIDES A COMPETITIVE ADVANTAGE TO BUILDING MATERIAL RETAILERS. CREATE FAST, ACCURATE AND DETAILED PRODUCT QUOTES, ILLUSTRATED PICK LISTS, AND DETAILED INSTALLATION PACKETS SPECIFIC TO EACH PROJECT.



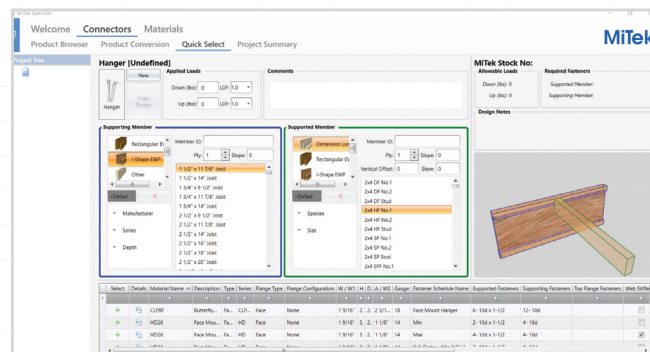
PRODUCT BROWSER

Enables users to identify products using Advanced Filtering, Sorting, and Reference Search. Access to USP comparative analysis also allows users to compare up to 4 products side by side.



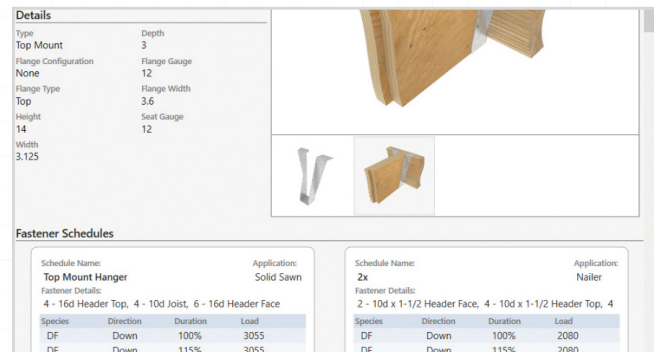
PRODUCT CONVERSION

Provides instant access to product details using the USP or an industry reference part number. Import existing product lists using a CSV formatted file.



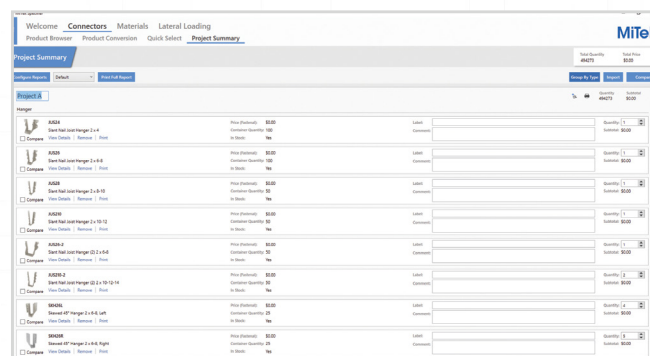
QUICK SELECT

Identifies the correct hanger based on specific application, member details, loads, and other design criteria.



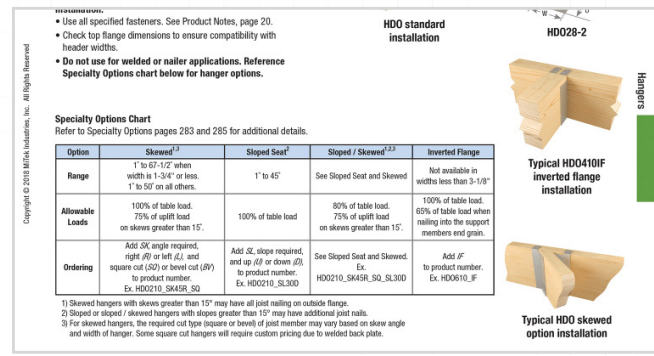
NEW! PRODUCT DETAIL VIEW

Comprehensive product information is available with a single click, making product analysis easier than ever before.



REPORTS

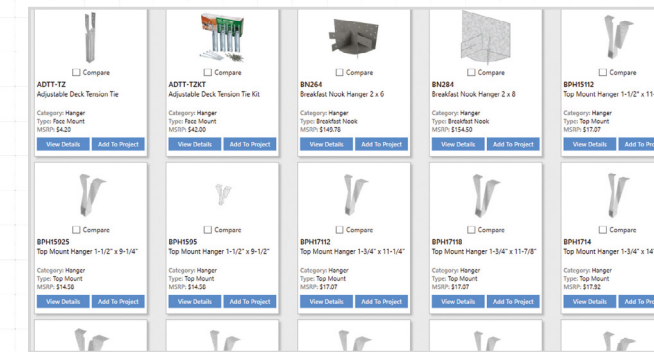
Customize a project summary specific to quoting, sales and supply needs. Import yard pricing, SKU #, hanger count and much more.



CATALOG PAGES

Generate catalog pages for each product specified. These pages include important product notes and application information essential for proper installation in the field.

MiTek Specifier enables engineers to quickly obtain product illustrations, create dual specification tables, access load values for all available wood species, view code reports, for both USP and competitor offerings.



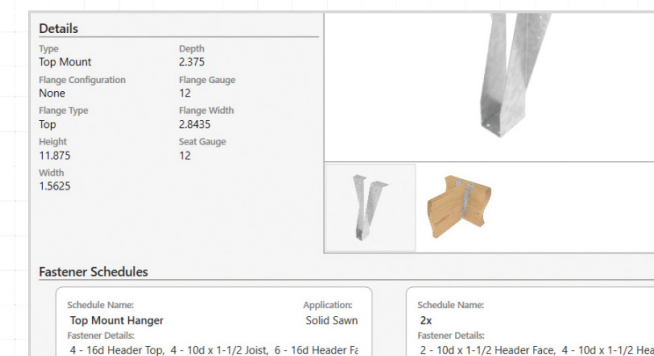
PRODUCT IMAGES

Supports hanger projects with a clear visual representation. Hanger quantities help with picking the orders in the yard and organization on the job site.

JUS24-TZ	ESR-3445 RR 25843 FL17232	DF (Solid Sawn) Face Mount Hanger	675	775	835	510	4 - 10d HDG (Header) 2 - 10d HDG (Joist)
	ESR-2549 RR 25807	DF (Solid Sawn) Face Mount Hanger	670	765	825	490	4 - 10d HDG (Header Face) 2 - 10d HDG (Joist)
JUS26	ESR-3445 RR 25843 FL17232, HVHZ	DF (Solid Sawn) Face Mount Hanger	870	1000	1080	1115	4 - 10d (Header Face) 4 - 10d (Joist)
	ESR-2549 RR 25807 FL10655	DF (Solid Sawn) Face Mount Hanger	865	990	1070	1165	4 - 10d (Header Face) 4 - 10d (Joist)
JUS26-2	ESR-3445 RR 25843 FL17232, HVHZ	DF (Solid Sawn) Face Mount Hanger	1040	1185	1220	1355	4 - 16d (Header Face) 4 - 16d (Joist)
	ESR-2549 RR 25807 FL10655	DF (Solid Sawn) Face Mount Hanger	1030	1180	1275	1165	4 - 16d (Header Face) 4 - 16d (Joist)

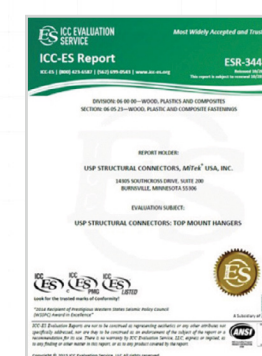
ALLOWABLE LOADS

Instantly create load charts with customizable tables. Readily compare reference products by allowable load, code evaluation and fastener schedule.



PRODUCT DETAILS

All-inclusive access to comprehensive product information with a single click of a button. Easily copy and paste these details from Specifier into CAD or other programs.



CODE REPORTS

Access national and local code reports including ICC-ES, LA City and the state of Florida product approvals.

MiTek[®] **SPECIFIER**[™] USP Structural Connectors

DOWNLOAD YOUR FREE COPY OR UPGRADE CURRENT VERSION AT:
[MiTek-US.com/Software/Specifier](https://www.mitek-us.com/Software/Specifier)

1-800-328-5934 | [MiTek-US.com/Software/Specifier](https://www.mitek-us.com/Software/Specifier)

©2021 MITEK INDUSTRIES, INC. ALL RIGHTS RESERVED.