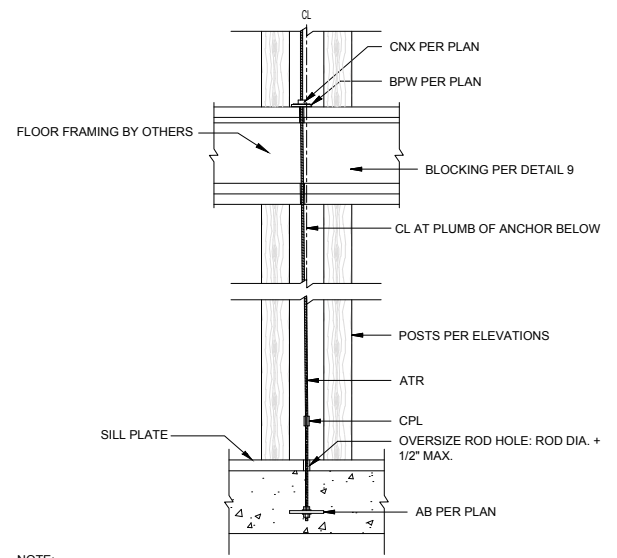
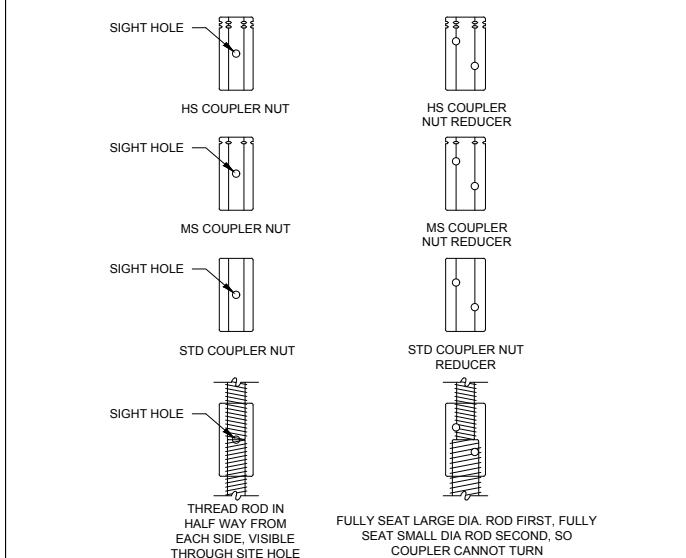


MIN WALL THICKNESS	BEARING PLATE WASHER (BPW) DIMENSIONS (IN)					
	DESIGNATION		W	L	T	HOLE DIA
4"	BPW-5	(BROWN)	3	3	1/4	1 5/16
	BPW-6	(RED)	3 1/4	3 3/8	3/8	1 9/16
	BPW-7	(YELLOW)	3 1/4	4 3/8	1/2	1 9/16
	BPW-9	(GREEN)	3 1/4	5	5/8	1 9/16
	BPW-11	(BLUE)	3 1/4	5 7/8	3/4	1 9/16
	BPW-15	(BLACK)	3 1/4	7 7/8	7/8	1 9/16
	BPW-20	(WHITE)	3 1/4	10 1/4	1 1/4	1 9/16
	BPW-25	(ORANGE)	3 1/4	11 3/4	1 1/2	1 9/16
	BPW-30	(LIGHT GRAY)	3 1/4	14	1 3/4	1 9/16
	6"	BPW17-6	(LIGHT BLUE)	5	5 7/8	5/8
BPW27-6		(TAN)	5	9	1	1 9/16
BPW36-6		(GRAY)	5	12	1 1/2	1 9/16
BPW43-6		(PURPLE)	5	14	1 3/4	1 9/16
BPW46-6		(PINK)	5	15	1 7/8	1 9/16

NOTE:
1. SEE DETAIL 1 FOR BPW DIMENSION DEFINITIONS.

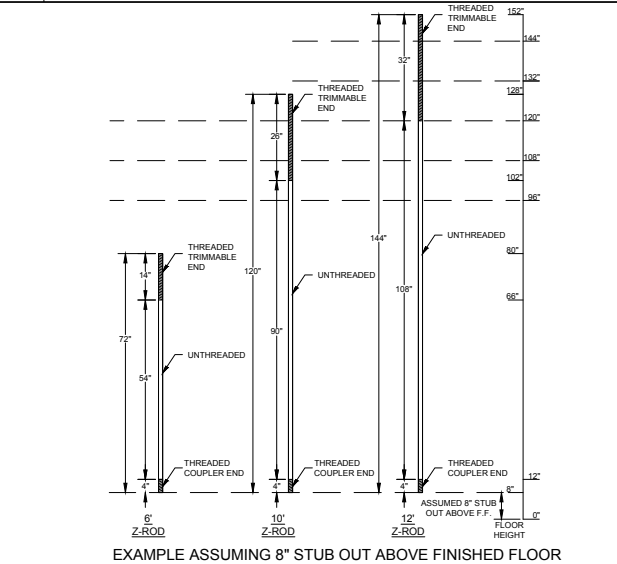
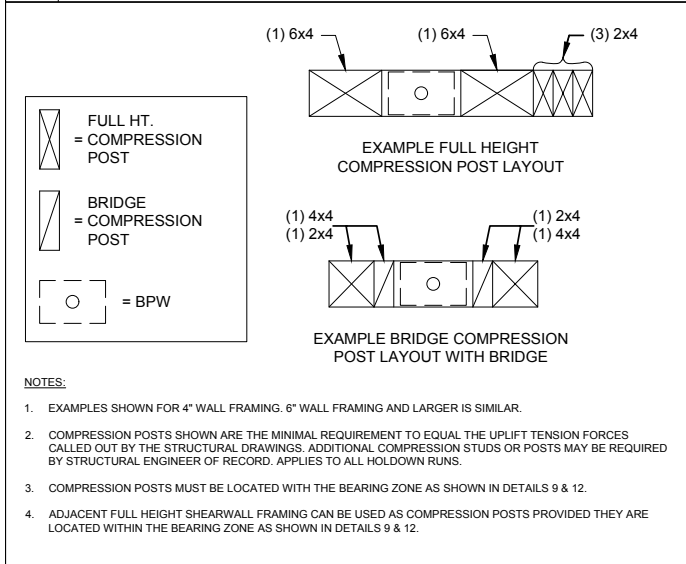
1 CINCH NUT (CNX) INSTALLATION

2 BEARING PLATE WASHER (BPW) DIMENSIONS



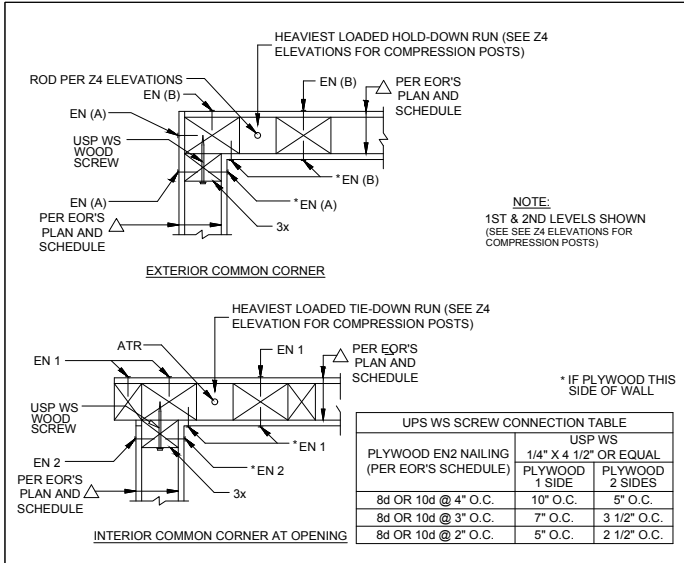
3 COUPLING NUT & DESCRIPTIONS

4 ALLOWABLE ROD OFFSET

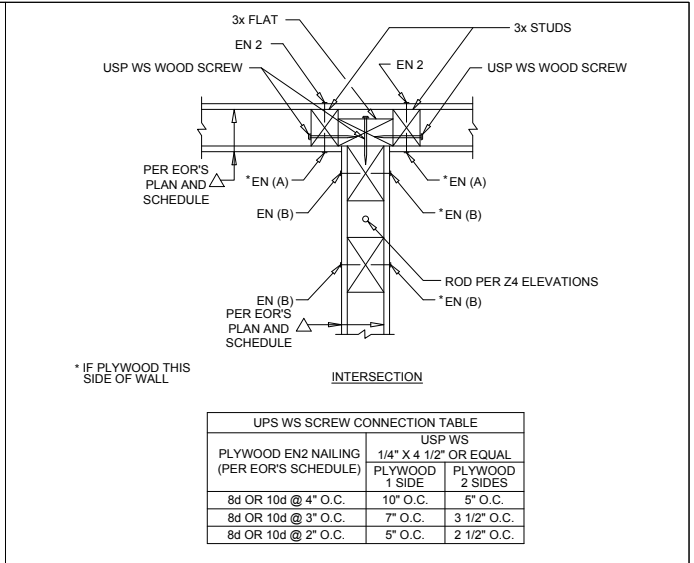


5 COMPRESSION POST LAYOUT

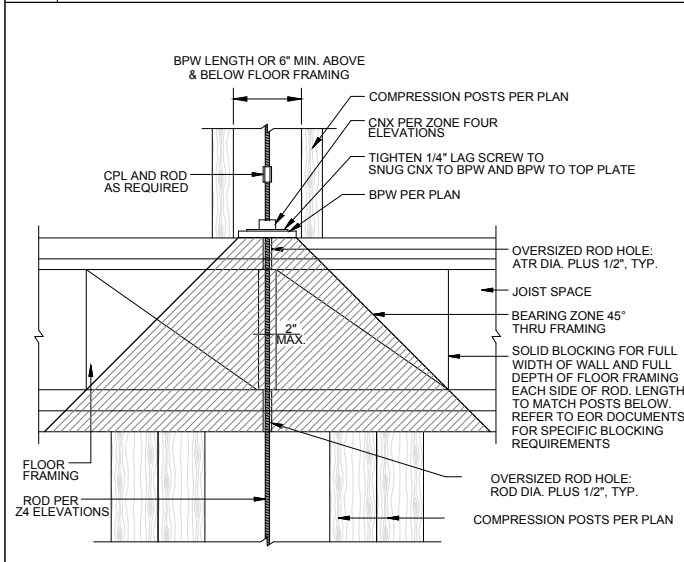
6 Z-ROD DIMENSIONS



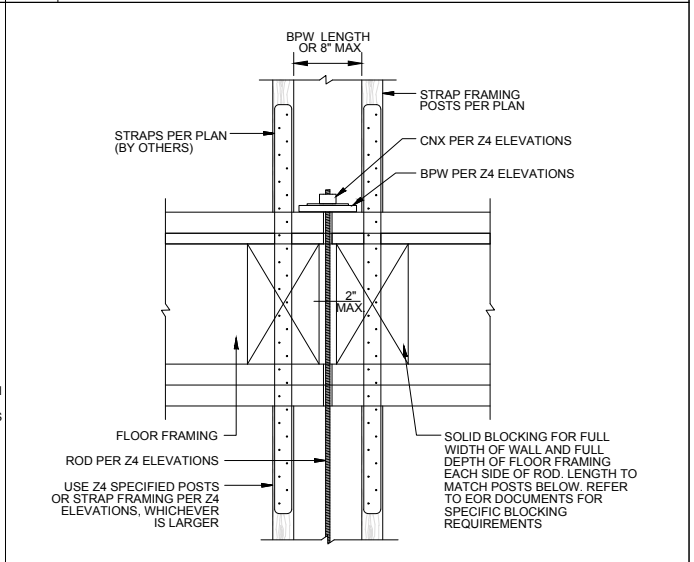
7 Z4 TIE-DOWN SYSTEM AT COMMON CORNER



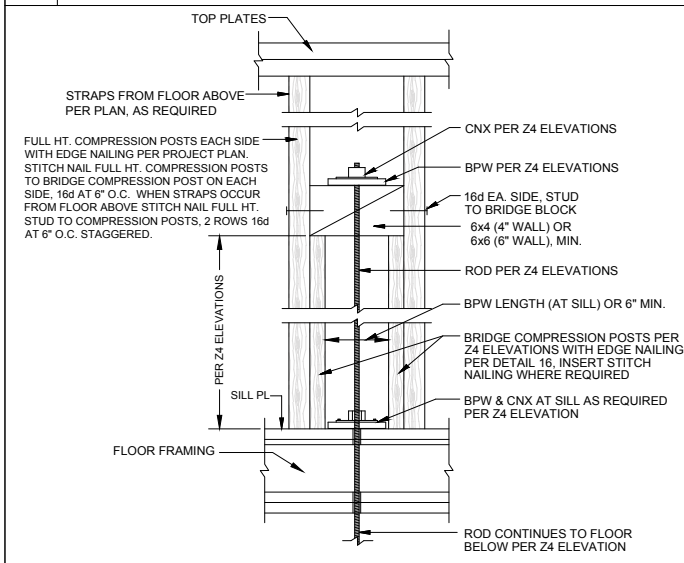
8 Z4 TIE-DOWN SYSTEM AT INTERSECTION



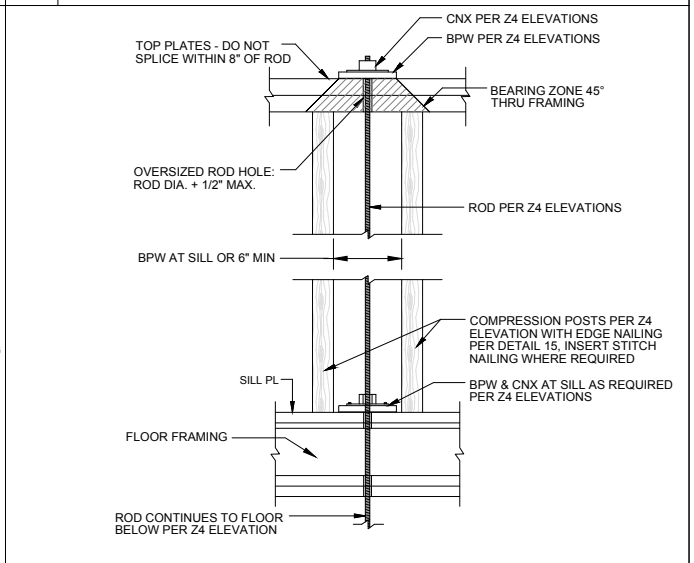
9 TYPICAL Z4 TIE-DOWN SYSTEM INSTALLATION DETAIL



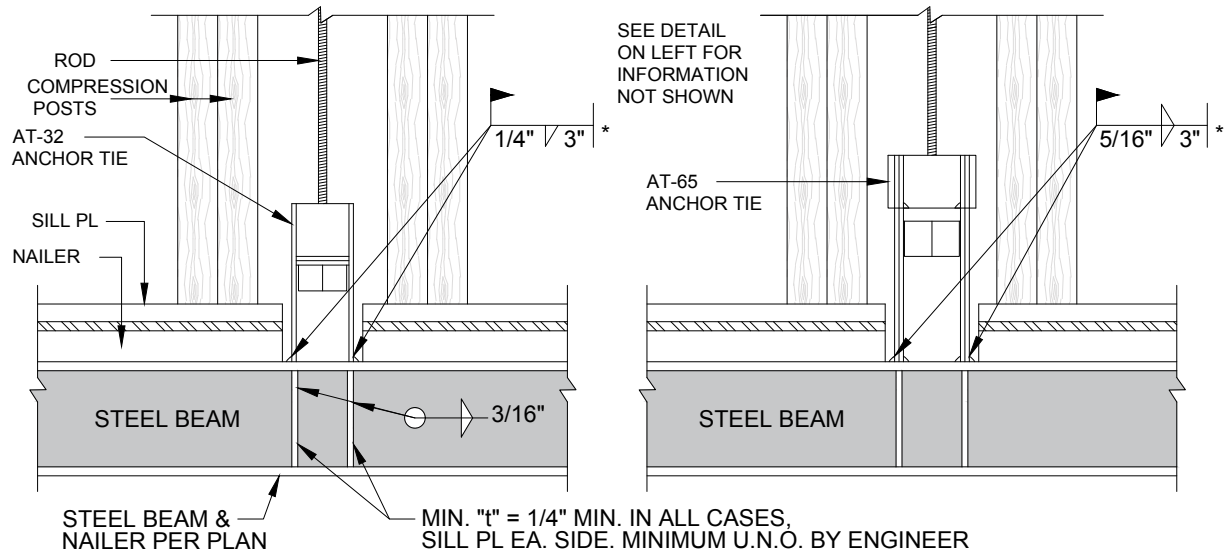
10 STRAP TERMINATION OPTION



11 BRIDGE TERMINATION OPTION AT TOP LEVEL



12 TOP PLATE TERMINATION OPTION

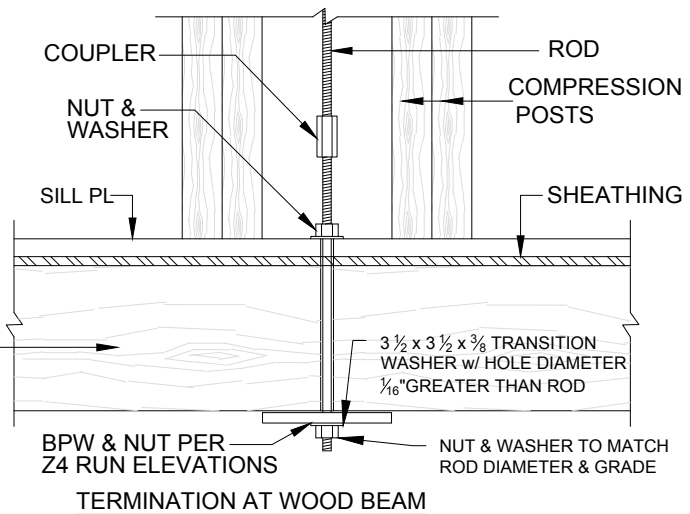


* SPECIAL INSPECTION OR APPROVED FABRICATOR FOR SHOP WELDING. FOR FIELD WELDING SPECIAL INSPECTION REQUIRED. WELD SHALL MEET AWS D1.8

TERMINATION AT STEEL BEAM

NOTE:
BEARING PLATE TO MEET OR EXCEED "CUMULATIVE LOAD DEMAND" NOTED ON Z4 ELEVATIONS.

BEAM SUPPORTING DISCONTINUOUS TIE-DOWN SHALL BE DESIGNED BY THE EOR

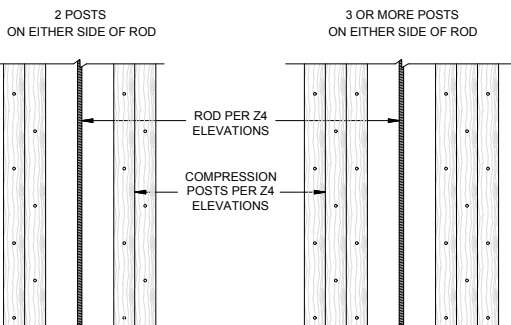


TERMINATION AT WOOD BEAM

13 OPTIONAL ANCHOR AT BEAM

EN PER EOR'S PLAN AND SCHEDULE	EDGE NAIL SPACING TO EACH POST EACH SIDE	
	2 POSTS	3+ POSTS
2 O.C.	4" O.C.	6" O.C.
3 O.C.	6" O.C.	9" O.C.
4 O.C.	8" O.C.	12" O.C.
6 O.C.	12" O.C.	12" O.C.

NOTE:
FOR SINGLE POST EACH SIDE OF ROD, NAIL PER SHEARWALL SCHEDULE.



INTENTIONALLY LEFT BLANK

14 COMPRESSION POST EDGE NAILING