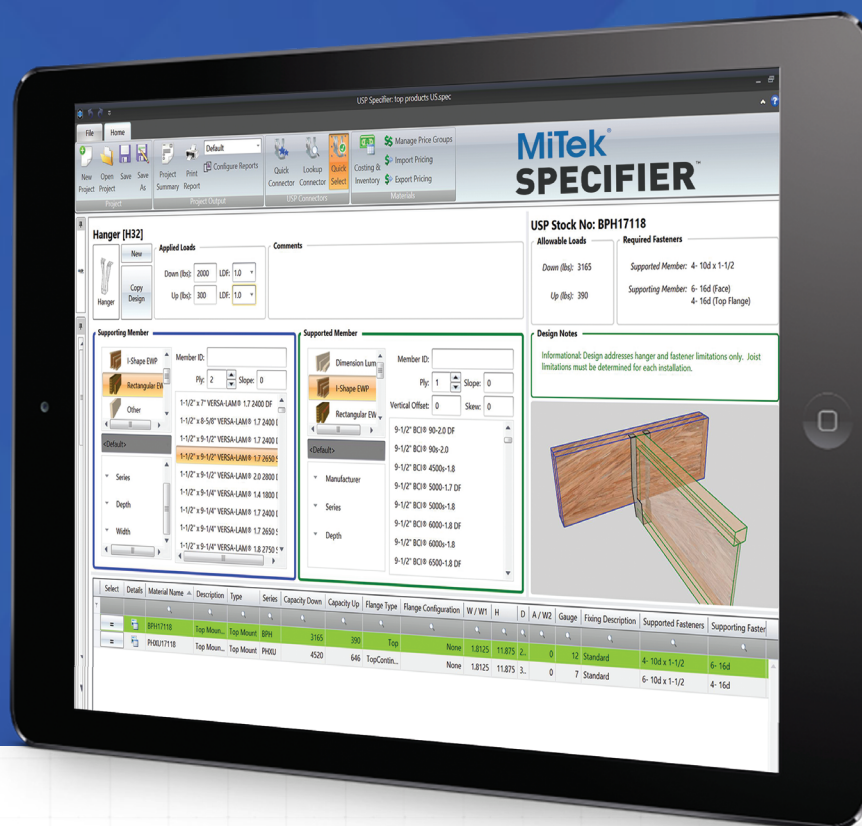


# MiTek<sup>®</sup> SPECIFIER<sup>™</sup> USP Structural Connectors

Download your Free copy or upgrade current version at:  
[MiTek-US.com/Software/Specifier](http://MiTek-US.com/Software/Specifier)

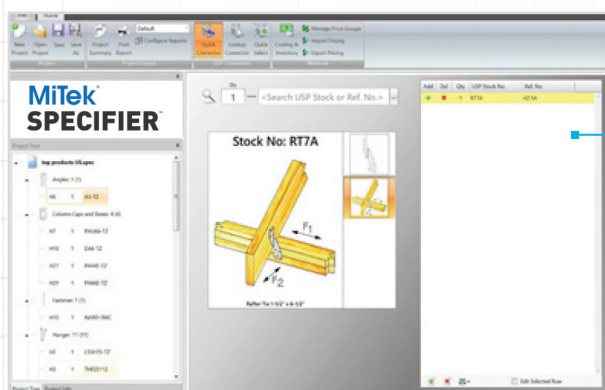


**MITEK SPECIFIER<sup>™</sup>** simplifies your access to information on over 3,000 structural connectors. This versatile tool assists with the design, specification and quoting processes for steel connections in wood frame structures of all sizes.

## SYSTEM REQUIREMENTS

Operating Systems: Windows 7, Windows 8, Windows 10.  
Specifier does not support the Mac operating system.  
CPU: 64 bit processor  
RAM: 2.0GB

There are 3 easy ways to **input information & identify structural connectors.**

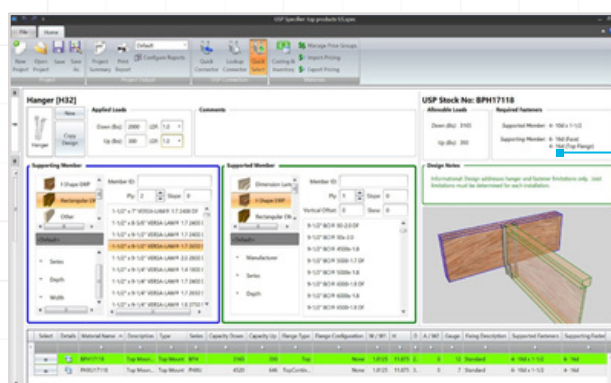
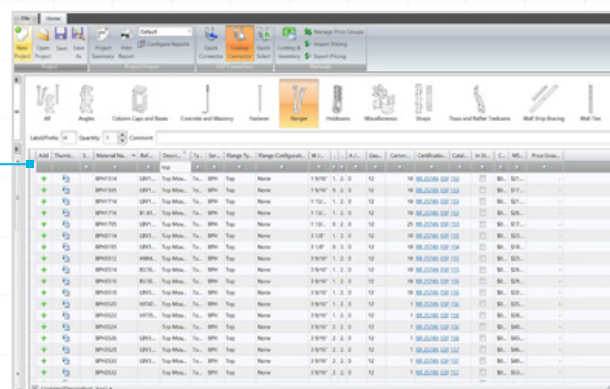


### QUICK CONNECT

Provides instant access to product details using the USP or an industry reference part number. Import existing product lists using a CSV formatted file.

### LOOKUP CONNECTOR

Enables the user to identify products using key word search, categories, features, and sizes.



### QUICK SELECT

Identifies the correct hanger based on specific application, member details, loads, and other design criteria.

# MiTek Specifier provides a competitive advantage to building material retailers. Create fast, accurate and detailed product *quotes*, illustrated *pick lists*, and detailed *installation packets* specific to each project.

## REPORTS

Customize a project summary specific to quoting, sales and supply needs. Import yard pricing, sku #, hanger count, carton quantity, nailing schedule and much more.

Project Summary Table				
USP Stock No.	Qty	Description	Price	Total Price
CM5216	2	Coiled Strapping 3" x 54"	\$ 244.57	\$ 489.14
HDC028	80	Heavy-Duty Top Mount Hanger 2 x 8	\$ 19.45	\$ 1,556.00
JUS26	700	Slant Nail Joint Hanger 2 x 8-8	\$ 1.06	\$ 742.00
JUS28	130	Slant Nail Joint Hanger 2 x 8-10	\$ 1.32	\$ 171.60
KST224	20	Strip Tie 1-3/4" x 22-7/8"	\$ 4.12	\$ 82.40
KST234	12	Strip Tie 1-3/4" x 32-3/8"	\$ 4.99	\$ 59.88
LSTA12	200	Strip Tie 1-1/2" x 12"	\$ 0.82	\$ 164.00
MP14	800	Framing Angle 1-7/8" x 1-1/2" x 2-13/16"	\$ 0.49	\$ 392.00
PHDA	106	Prefabricated Holdown 3" x 7-3/4"	\$ 28.70	\$ 3,042.20
PHDA4	64	Prefabricated Holdown 3" x 9-3/8"	\$ 37.50	\$ 2,400.00
PHD8	23	Prefabricated Holdown 3-1/4" x 16-1/2"	\$ 64.07	\$ 1,473.61
RS150	4	Coiled Strapping 1-1/2" x 150"	\$ 227.50	\$ 910.00
RT15	400	Rafter Tie 1-3/8" x 5-1/4"	\$ 1.14	\$ 456.00
TR2925	1	Face Mount 1-1/2" x 9-1/4" - 9-1/2"	\$ 4.17	\$ 4.17
UPHD14	3	Holdown 3" x 18-3/4"	\$ 134.14	\$ 402.42
			<b>Total Price:</b>	<b>\$ 13,087.68</b>

Comments: Actual job quote pulled from CRM

## CATALOG PAGES

Generate catalog pages for each product specified. These pages include important product notes and application information essential for proper installation in the field.

**PHD / PHDA Prefabricated Holdowns**

Reduce assembly in the field with decreased on-site labor. No thru-balls to install.

**Notes:** See chart.  
**Notes:** 100% galvanized.  
**Notes:** See page 11 for Code Reference Key Chart.

**Installation:**

- Use all specified hardware. See Product Notes, page 11.
- Place the PHD/PHDA over the anchor bolt. No washer is required.
- Install with USP's code evaluated W3 (1/4" x 7") steel screws, which are provided with this holdown.
- Higher anchor bolt torque length, long to hole, plus 1/2" to 1" additional torque with a wrench.
- PHD/PHDA Prefabricated Holdowns may be installed on all joists with no load reduction.
- The design engineer may specify an alternate anchorage calculation to meet the tension load for a specific application. Anchorage length should take the bearing plate height of 1-1/2" into account. Anchor bolt thread should extend above hole.
- Use to anchor a built-up post, such as a double 2 x 4, the post connection shall be designed for a single post. Holdown fasteners specified shall not be considered to attach multiple posts together.
- For anchorage systems see ESR. Anchor Bolt tension on page 24-25.

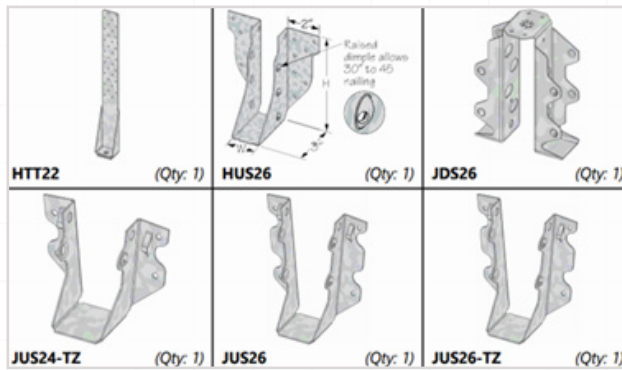
**PHD PHDA**

Part	Material	Quantity	Weight	Notes
PHD	Steel	106	28.70	
PHDA	Steel	64	37.50	
PHD8	Steel	23	64.07	

# MiTek Specifier enables engineers to quickly obtain product *illustrations*, create dual *specification tables*, access *load values*, view code reports, and create *fastener schedules* for both USP and competitor offerings.

## PRODUCT IMAGES

Supports hanger projects with a clear visual representation. Hanger quantities help with picking the orders in the yard and organization on the job site.



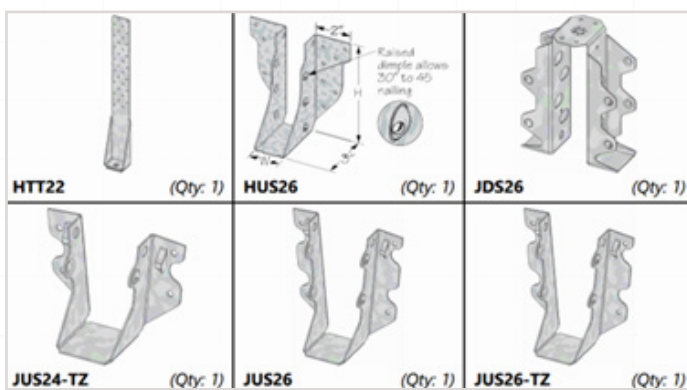
## ALLOWABLE LOADS

Instantly create load charts with customizable tables. Readily compare reference products by allowable load, code evaluation and fastener schedule.

Product	ESR-3445 RR 25843 FL17232	DF (Solid Sawn) Face Mount Hanger	675	775	835	510	4 - 10d HDG (Header Face) 2 - 10d HDG (Joist)
JUS24-TZ	ESR-2549 RR 25807	DF (Solid Sawn) Face Mount Hanger	670	765	825	490	4 - 10d HDG (Header Face) 2 - 10d HDG (Joist)
JUS26	ESR-3445 RR 25843 FL17232, HVHZ	DF (Solid Sawn) Face Mount Hanger	870	1000	1080	1115	4 - 10d (Header Face) 4 - 10d (Joist)
	ESR-2549 RR 25807 FL10655	DF (Solid Sawn) Face Mount Hanger	865	990	1070	1165	4 - 10d (Header Face) 4 - 10d (Joist)
JUS26-2	ESR-3445 RR 25843 FL17232, HVHZ	DF (Solid Sawn) Face Mount Hanger	1040	1185	1220	1355	4 - 16d (Header Face) 4 - 16d (Joist)
	ESR-2549 RR 25807 FL10655	DF (Solid Sawn) Face Mount Hanger	1030	1180	1275	1165	4 - 16d (Header Face) 4 - 16d (Joist)

## PRODUCT DETAILS

Easily copy and paste details from Specifier into CAD or other programs.



## CODE REPORTS

Access national and local code reports including ICC-ES, LA City and the state of Florida product approvals.

