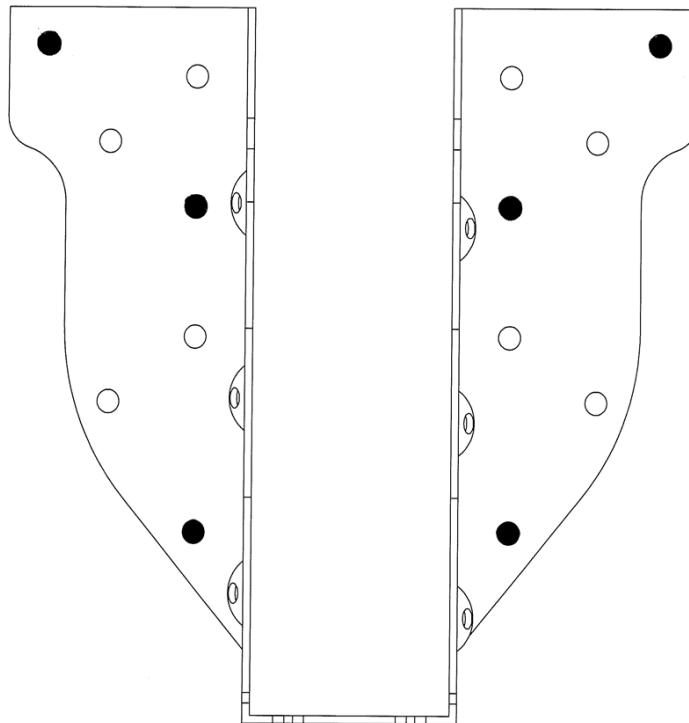


Technical Bulletin
HUS26 Face Mount Hanger
MASONRY APPLICATION

The *HUS26 Face Mount Hanger* can be used to connect 2x6 or 2x8 plated wood trusses, rafters, or joists to masonry wall structures. Allowable loads are based on proper use of fasteners installed per manufacturer's specifications.

- Masonry screw shall be 3/16" diameter Powers® Fasteners Tapper+.
- Minimum masonry screw embedment shall be 1-1/4".
- Install masonry screws **only** in **shaded fastener holes** as indicated on illustration to achieve listed loads in the table below.
- Install joist nails parallel to the face of the wall.



USP Stock No	Description	Fastener Schedule ²				DF/SP Allowable Load (lbs) ^{1,3}			
		Steel Gauge	Wood		Masonry		Down	Uplift ⁵	Field Uplift ⁶
			Qty	Size ⁴	Qty	Size			
HUS26	2 x 6-8 Face Mount Hanger	16	6	10d x 1-1/2	6	3/16"	840	280	840

1) Allowable loads assume the use of Powers® Fasteners 3/16" Tapper+™ with minimum embedment of 1-1/4".
2) Fasteners to be installed per manufacturer's recommendations.
3) Allowable loads based on specified holes being filled.
4) 10d x 1-1/2" nails are 9 gauge (0.148" diameter) by 1-1/2" long.
5) Allowable uplift when the uppermost masonry fasteners have an edge distance less than 2" from the top of the masonry wall.
6) Allowable uplift when the uppermost masonry fasteners have an edge distance greater than 2" from the top of the masonry wall.