



**Round Holes:**  
Always fill all (normal-size) round nail holes, unless otherwise noted.

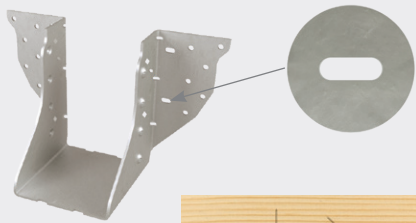


**Diamond Holes:**  
Optional nailing for maximum listed capacity or for temporary hanger fastening during installation.

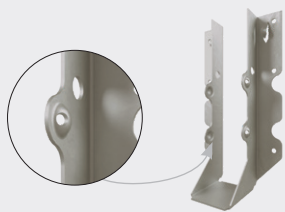
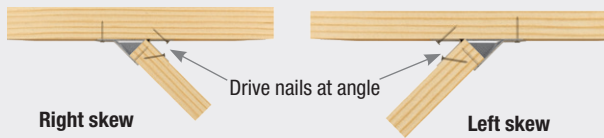
When there are **MIN** and **MAX** values:  
**MIN:** fill all round nail holes  
**MAX:** fill all round and diamond holes



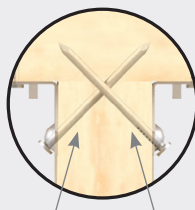
**Large Round Holes:**  
For concrete/masonry installation; no need to be filled when connected to wood. Large round holes may be used for manufacturing which do not require a fastener. Verify fastener schedule in catalog.



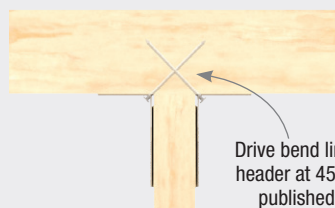
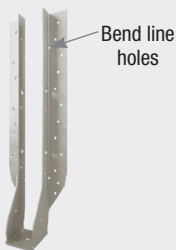
**Obround Holes:**  
For ease of nailing at a tight location; always fill.



**Dimple Holes:**  
Guide double shear nails into the joist and header at a 30° to 45° angle

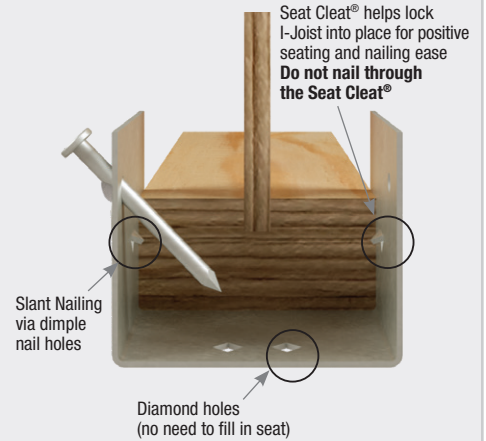


Use specified standard length common nails.  
16d common and 10d common nails are 3-1/2" and 3" long respectively.



Drive bend line nails into header at 45° to achieve published strength

Typical I-Joist Nailing



Common Nailing Errors



**Wrong Angle**

When a nail is driven into the bottom flange of the wood I-Joist parallel to the glue lines, separation of veneers can occur which substantially reduces the design loads of the connection.



**Nail Too Long**

When using nails longer than MiTek's recommended nails, bottom flange splitting may occur. Also, this can raise the wood I-Joist off the seat, resulting in uneven surfaces and squeaky floors along with reduced design load.